



# SUPER LED

High Efficacy & Economic  
Horticultural Grow Bar Lighting Solution



## Performance

- Absolute market leading PPF 2345  $\mu\text{mol/s}$
- Highest photon efficiency 2.6-2.8  $\mu\text{mol/J}$
- Sunlike growth spectra with highest yields
- Deepest canopy penetration rate



## Flexible

- All in one design, build-in driver, free assemble, save time and labor.
- Daisy chainable and group controllable with RJ11 connection
- Uniform light distribution adaptable to your canopy



## Quality

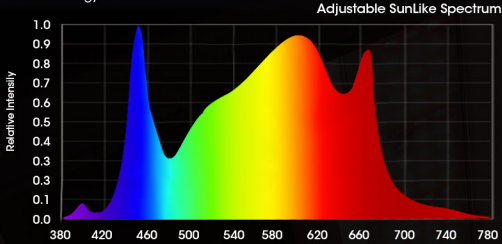
- Extreme lifetime >100,000hrs
- 5 years warranty
- Best passive cool management
- Top-bin Samsung LED chips



# HORTICULTURE LED MAXIMIZE YOUR-YIELDS AND PROFITS

## Selected Spectrum For Optimum Growth

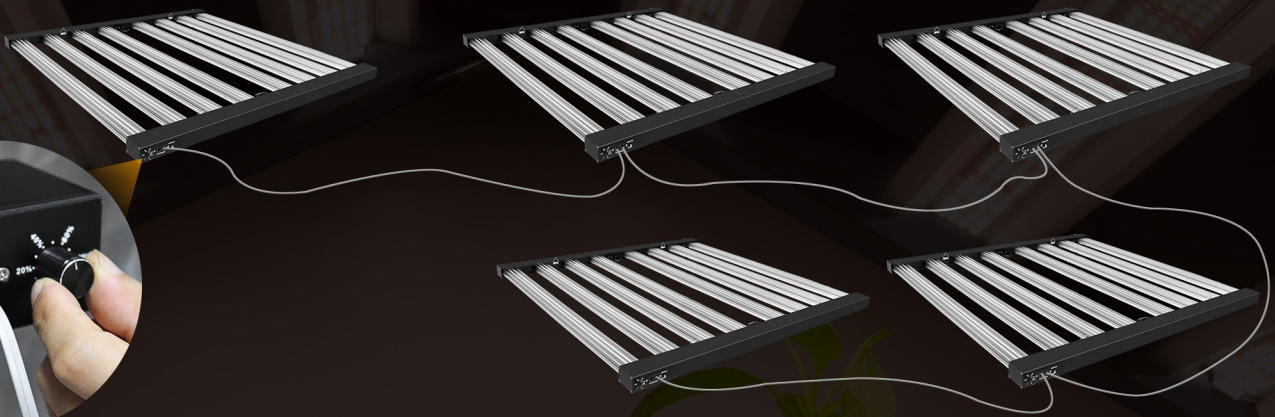
Spectrophotometer Test Report  
Relative Energy Distribution



Our technologically selected spectrum ensures that only light within the Photosynthetically Active Radiation (PAR) region is provided to ensure optimal growth within each growth phase for each plant type.

## Dimming & Light Switch Daisy Chain

Meet Your Commercial Planting Needs, Bring You a More Convenient Planting Life



1 Dimmable & Flexible

2 Multiple Models Daisy Chain Dimming

Using a daisy chain signal cable, support multi-lights connection up to **5-10 lights**.



**RJ11 touch screen controller optional**  
for commercial growers' projects

Max control **40-50 lights** with 2 groups

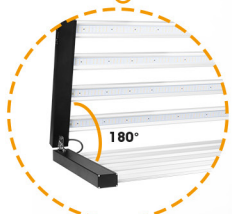
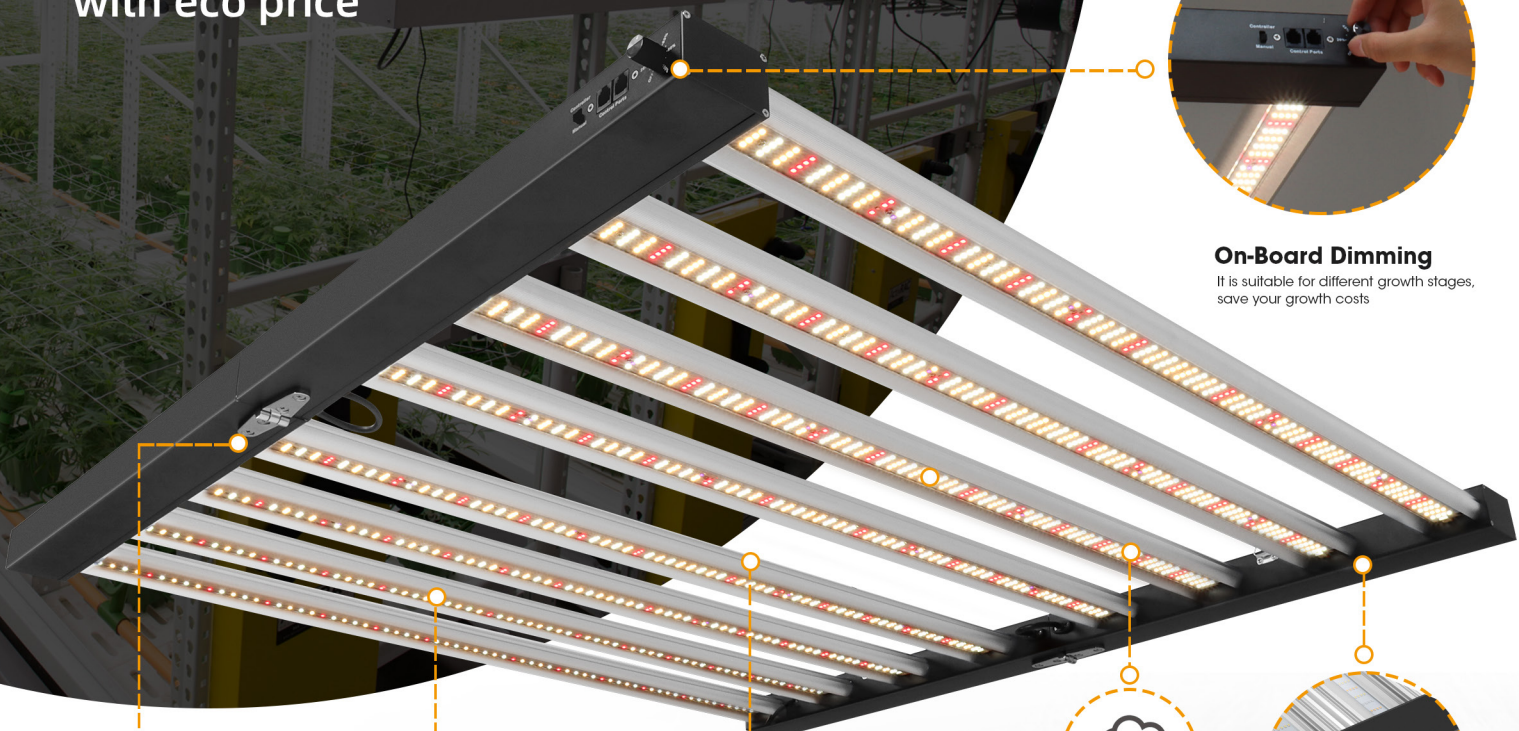


# BEST COMMERCIAL LED GROW LIGHT SOLUTIONS

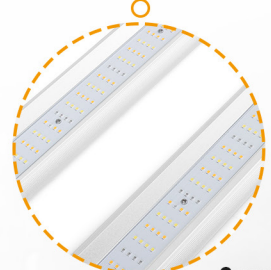
Replace traditional HPS HID CMH grow lights with eco price



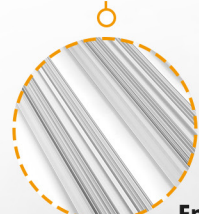
**On-Board Dimming**  
It is suitable for different growth stages, save your growth costs



**180° Foldable**  
Quick installation, reduce labor cost



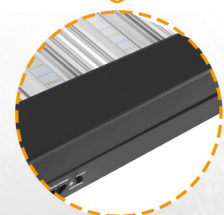
**Samsung LED**  
Outstanding Efficiency  
2.7 umol/J System Efficacy



**Enlarged fin cooling profile**  
Fast heat dissipation, increase the use time of the lamp.



**Customized Waterproof IP65**  
Suitable for different growing environments.



**Build-in UL Drivers**  
Ensure the high quality of the LED grow lightings

## Multiple power options(840W/630W/400W)

Applicable to different economic budgets



**SP-600 -6 Bars**  
Power draw: **630W**  
LED Qty: 1632 PCS



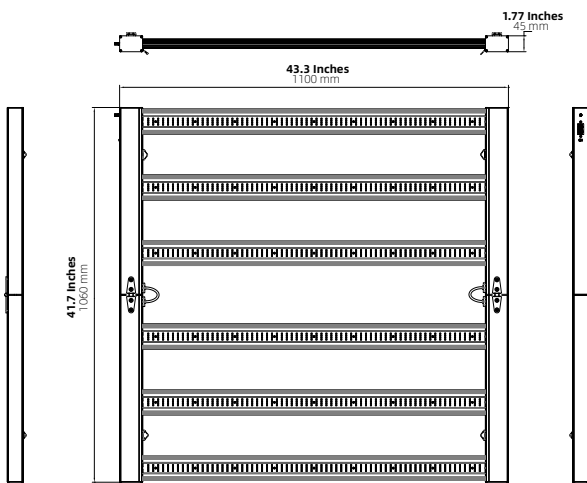
**SP-800 -8 Bars**  
Power Draw: **840W**  
LED Qty: 2176PCS

# SP-600

630W -Full spectrum- Passive cooling



## INSTRUCTION:

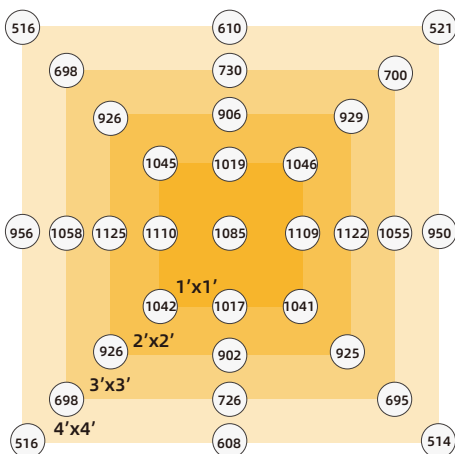


## TECHNICAL SPECIFICATIONS:

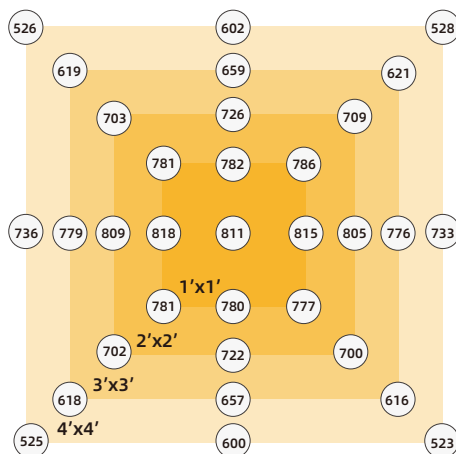
LED Qty	1632 PCS
Emitting Color	3000K/5000K /RED 660nm /UV 395nm /IR 730nm
LED Source	Top-Bin Samsung LED
Power Draw (W)	630W
HPS Equivalent	1500W
Par Efficiency	2.7 μmol/J
PPF	1701 μmol/S
Driver	Build-in UL Driver
Input Voltage	Autosensing 90-305V
Footprint	6'x6'(veg),5'x5'(Bloom)
Mounting Height	18" - 36" above canopy
Thermal Management	Passive cooling
Max. Ambient Temperature	95°F / 35°C
Dimming	1 Manual dimmer &RJ11 Controller
Operating Temp	-20°C - 40°C (-4°F - 104°F)
Lifetime	>100,000hrs
Warranty	5 Year

## PPFD CHART:

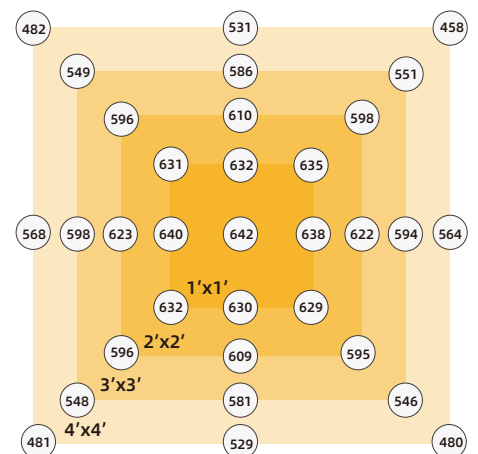
Mounting Height @ 12 inch(30cm)



Mounting Height @ 24 inch(60cm)



Mounting Height @ 36 inch(90cm)



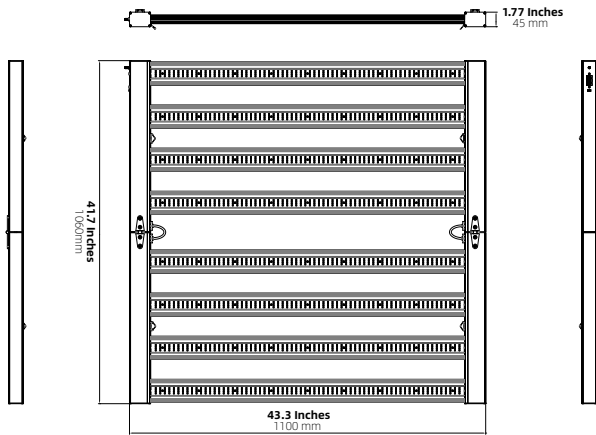


# SP-800

840W -Full spectrum- Passive cooling



## INSTRUCTION:

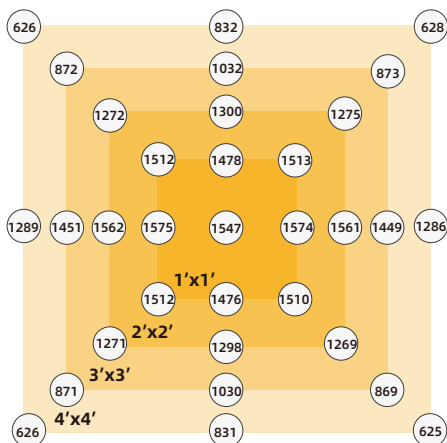


## TECHNICAL SPECIFICATIONS:

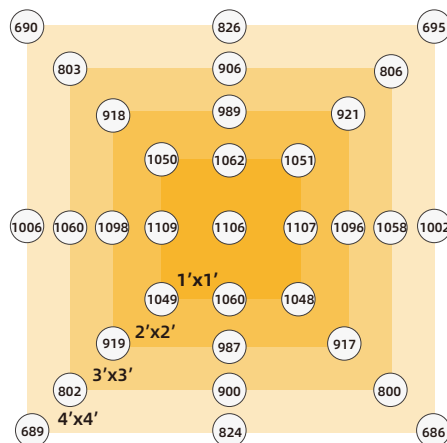
LED Qty	2176 PCS
Emitting Color	3000K/5000K /RED 660nm /UV 395nm /IR 730nm
LED Source	Top-Bin Samsung LED
Power Draw (W)	840W
HPS Equivalent	2000W
Par Efficiency	2.7 $\mu\text{mol}/\text{J}$
PPF	2268 $\mu\text{mol}/\text{S}$
Driver	Build-in UL Driver
Input Voltage	Autosensing 90-305V
Footprint	7'x7' (veg), 6'x6' (Bloom)
Mounting Height	18" - 36" above canopy
Thermal Management	Passive cooling
Max. Ambient Temperature	95°F / 35°C
Dimming	1 Manual dimmer & RJ11 Controller
Operating Temp	-20°C ~ 40°C (-4°F ~ 104°F)
Lifetime	>100,000hrs
Warranty	5 Year

## PPFD CHART:

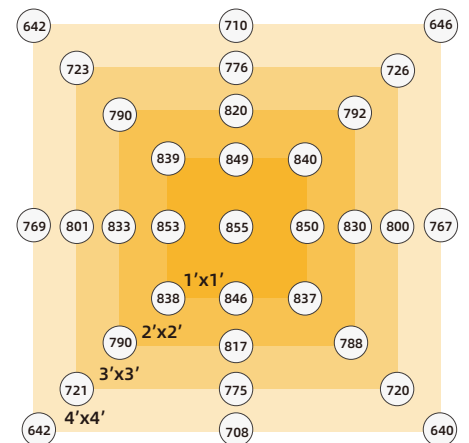
Mounting Height @ 12 inch(30cm)



Mounting Height @ 24 inch(60cm)



Mounting Height @ 36 inch(90cm)



# MORE LED GROW LIGHT RECOMMEND

## From 100 watts to 2000 watts



Keep healthy mothers for ages



Save over 60% electricity



Harvest increase more than 30%



Sun-like spectrum 2700-6500K



Perfect light distribution



Boost branching & clone production

## OUR MISSION:

- 01. Delivering the highest quality, plant-loving light to your crops is one of our two primary aims at Grow Light Science.
- 02. Our second aim is to offer lower LED fixture cost. Our strategy is to give your plants what they need to flourish while giving you what you need most—exceptional ROI and more money in your pocket.