

## LED Growing Light For Indoor Plants

Samsung LED | High Efficacy | All In One Design  
wavelength of 380-780nm.

# USER MANUAL



# INSTRUCTIONS

## Folding 840W Dimmable LED Grow Bar Light

### On-Board Dimming

It is suitable for different growth stages, save your growth costs



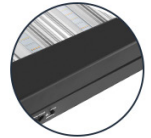
### Group Control

Idea for Group Control (max 50 lamps) & Timing and Dimmable Function.



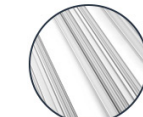
### 180° Foldable

Quick installation, reduce labor cost



### Build-in UL Drivers

Durable and reliable power source, all in one design.



### Enlarged Fin Cooling Profile

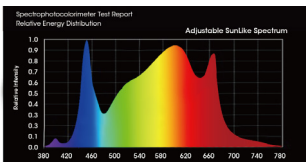
Fast heat dissipation, increase the life span of the lamp.



### Samsung LED

Mixed with cool white, warm white, red and UV-IR (3000K, 5000K, 660nm and IR 730nm & 395nm UV)

## Selected spectrum for optimum growth



### Cool white light 5000K

Accelerate stem growth and promote plants sprout.

### Warm white light 3000K

Promote Photosynthesis rate, help plants get more nutrients.

### Red light 660nm

Speed up the flowering and fruiting stage, get more crops.

### IR light 730nm

Speeds up the Phytochrome conversion, promote plants to produce greater yields.

### UV light 395nm

It's that glow that can increase the efficiency of photosynthesis.



## How To Use?

**Wk1-3** @24-30" / 50% Power

**Wk4-6** @18" - 24" / 75% Power

**Wk7-8** @18" - 24" / 100% Power

**Wk9-10** @12" - 18" / 100% Power

# Group Control

Bring You a More Convenient Planting Life

## Operating Instructions

1. Before turning on the lamp, please adjust the scale of the knobs to 0%.
2. Two control modes are available.

For the **Manual Mode**:  
set the toggle switch to the left "Manual"

For the **Controller Mode**:  
set the toggle switch to the right "Controller"



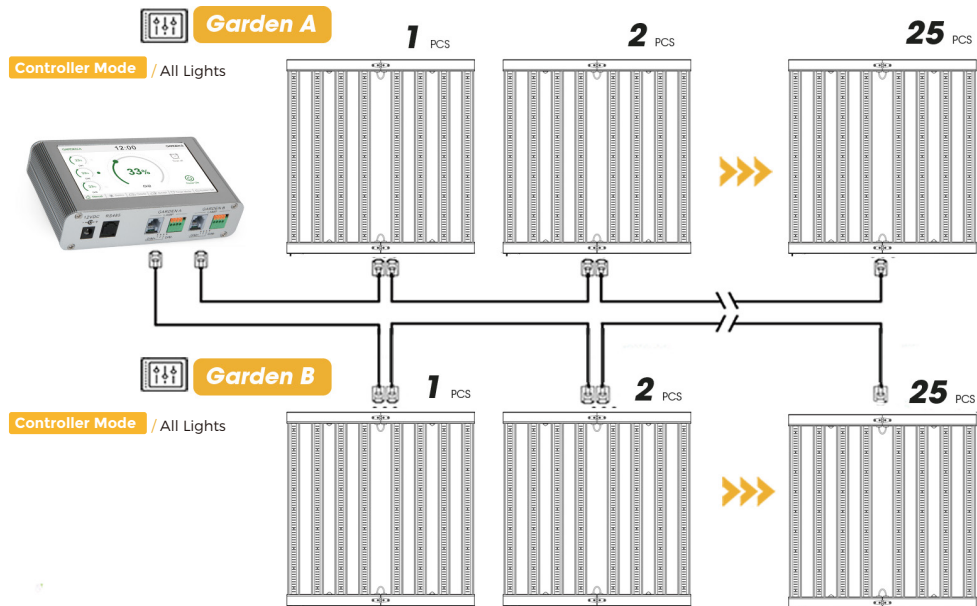
## Manual Mode - Support multi-lights connection up to 10 lights.



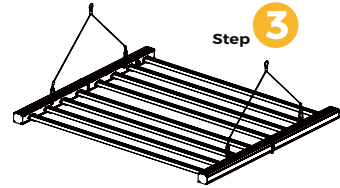
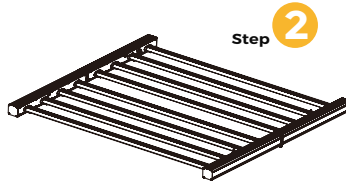
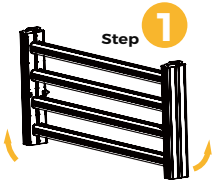
1 Dimmable & Flexible

2 Multiple Models Daisy Chain Dimming

## Controller Mode - Meet Your Commercial Planting Needs



## Installation - All in one design, no removable driver box



## SAFETY INFORMATION

### OPERATION OF THE LIGHT



#### Eye Exposure:

1. Wear approved eye protection for protection from UV rays, and appropriate certification compliances for LED lighting.
2. Do not use lamps in applications where humans and/or animals will be subjected to direct long-term uncomfortable visual exposure to light emissions as this could result in eye injury. If the lamp appears damaged, remove power and then repair or request replacement of the product.



#### Electrical Hazard:

1. Electrical shock hazard is always associated with the use of electrical appliances and working with electricity. Do not use if cords or plugs are damaged or with loose electrical sockets. Unsecured connections can cause electrical shock or fire. Do not touch the power cord with wet hands or disconnect from power source by pulling on the cord, as doing so may result in electrical shock. Do not bend or damage the power cord or unit wiring, as doing so may cause electrical shock or fire. User holds sole liability and responsibility for proper use, handling and installation of this product.
2. When performing any troubleshooting please disconnect the AC power and wait 30 seconds for power supply to de-energize. It is also important to follow this step before any inspection, adjustment or maintenance to lamps.



#### Burn Warning:

1. Operating lamps may become hot and may involve some risk of causing fire or serious bodily injury or other damages. Use of temperature resistant gloves is recommended.  
\*Always allow sufficient time for products to cool prior to touching.

## Caution

Failure to comply with safety cautions and regulations can cause injury or property damage.

- Care and use your device properly. Do not use the device for anything other than its intended use.
- Damages or poor performance caused by failure to follow warnings and instructions can void your manufacturer's warranty.