

S-BC320 Cleaning Machine Introduction

An energy-saving environmental protection, batch cleaning, integrated high-end cleaning machine. It can automatically complete cleaning, rinsing, drying process by just push the start key.

Mainly used for aviation, aerospace, medical, new energy, automotive electronics and other products . This machine can effectively clean residual rosin flux, water-soluble flux , No-clean flux / solder paste ball and other organic and inorganic pollution materials on SMT / THT PCBA.

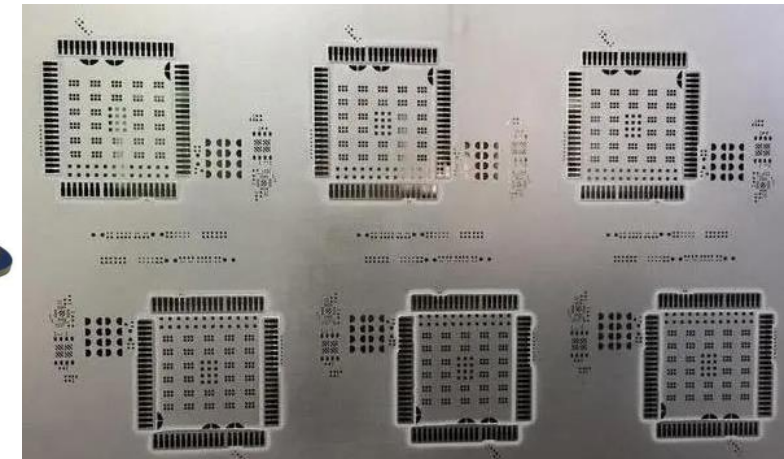


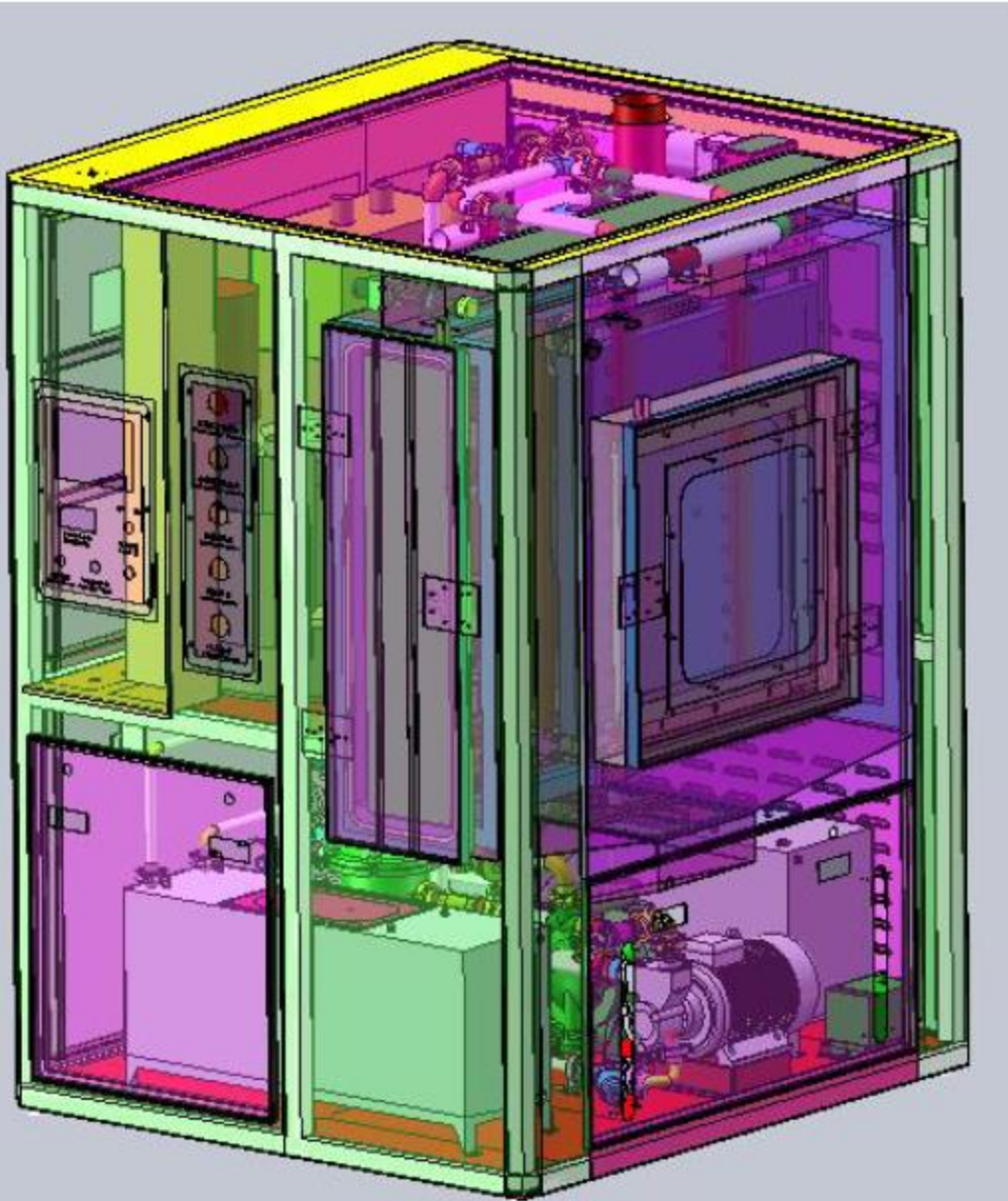
PCBA Cleaning Machine S-BC320



S-BC320 water-based electric stencil cleaning machine. The machine uses water-based cleaning fluid cleaning, DI water rinsing, hot air drying process, and spray cleaning process.

It is mainly used for automatic cleaning of SMT solder paste stencil, red glue stencil, red glue copper mesh, scraper, PCBA, and cleaning fluid circulation. Use, rinse DI water can be used in closed loop or open loop.





Main modules of equipment

The equipment has an integrated structure and automatically completes the cleaning, rinsing and drying processes in one cavity.

1. Cleaning: Cleaning with water-based cleaning fluid, the time can be set;
2. Rinsing: DI water rinsing, time can be set;
3. Drying: hot air drying, time can be set.

Basic cleaning process

Put the PCBA or stencil into the basket → clean with chemical solution → rinse with DI water → dry with hot air → take out PCBA or stencil

Cleaning method

Direct spraying to PCBA/stencil surface on both top and bottom side

Customized baskets

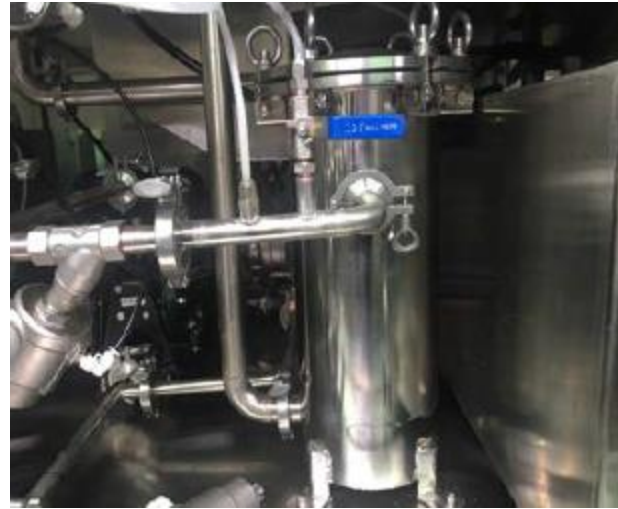
S-BC320



Cleaning room made of
SUS 304 stainless steel



Air controlled solenoid valve



Filter



Container for chemical

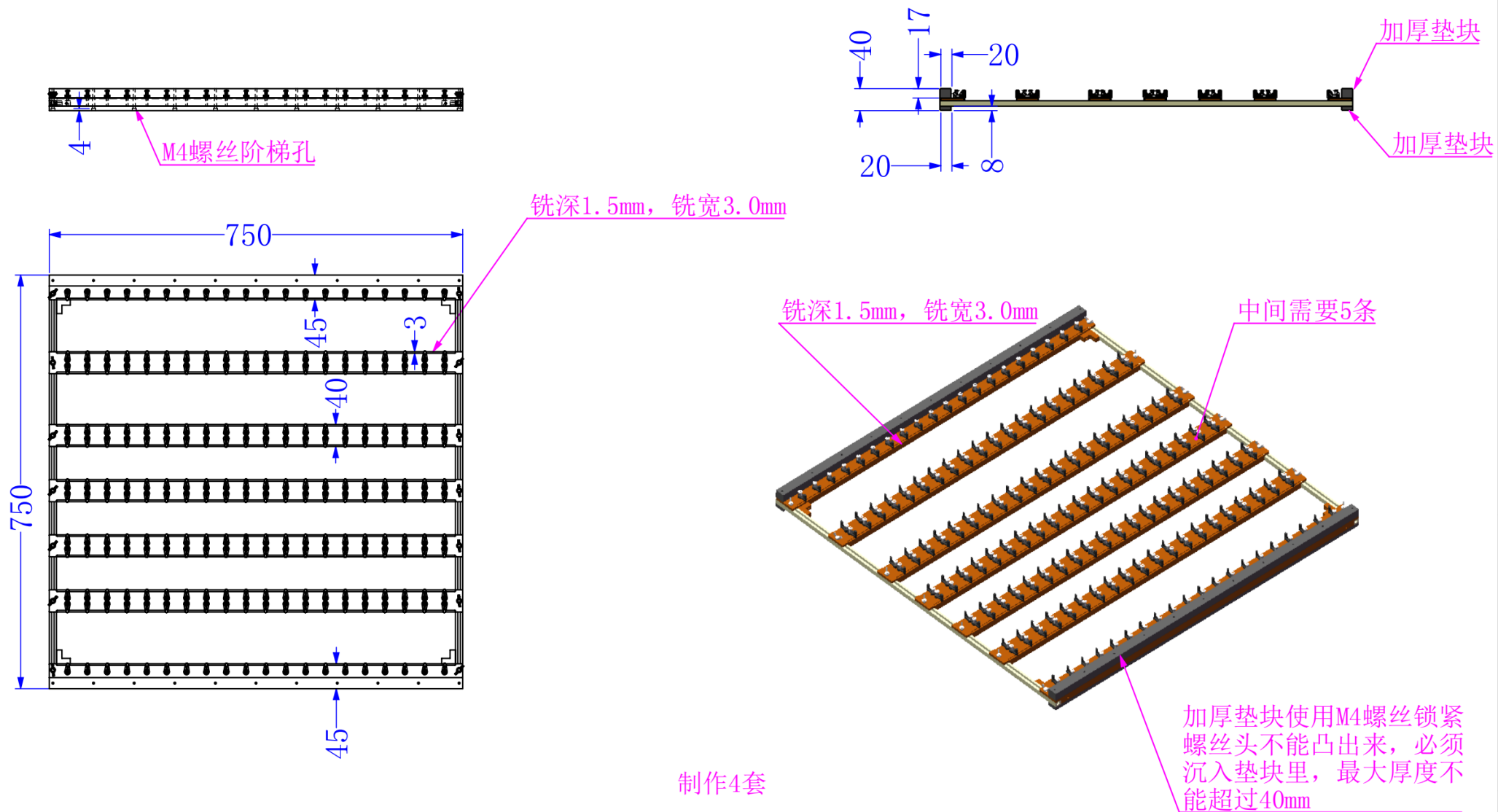


Electric pump

Blower

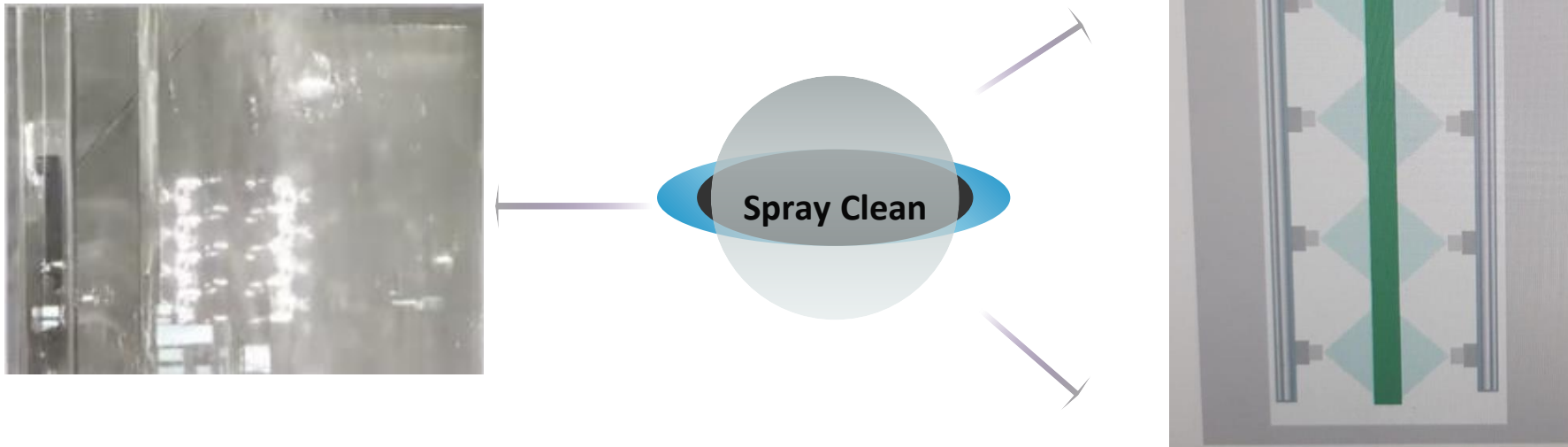


Fixture dimension

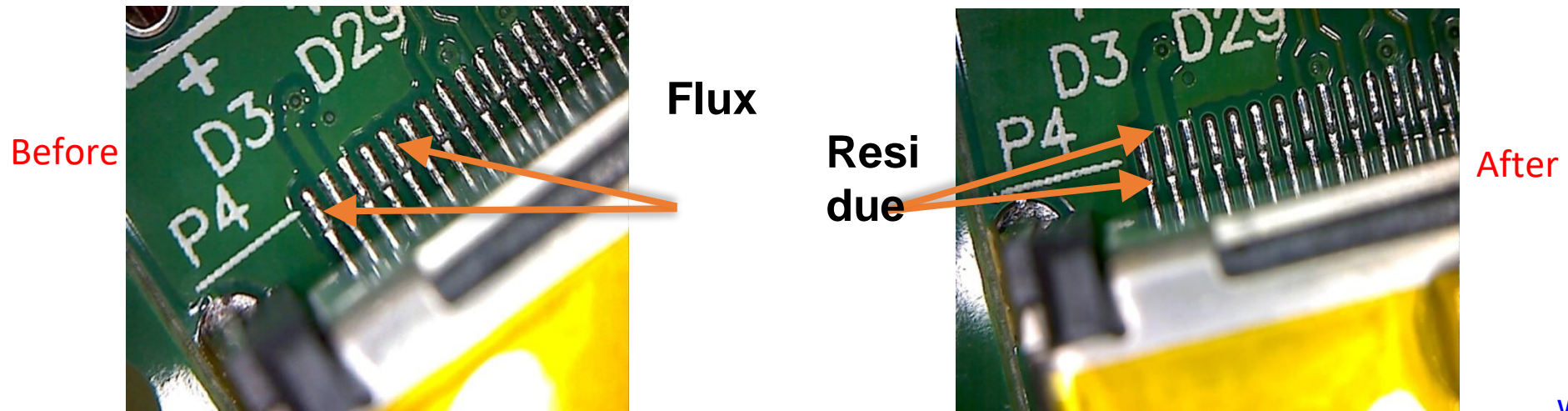




(2) Cleaning Method



(3) Cleaning Results



(4) Specifications

Item	parameters	Item	parameters
Max. PCBA dimension	L736*W736(mm)	Rinse heating power	9KW
Max. stencil dimension	L737*W737*H40(mm)	Drying heating power	6KW
Liquid tank/water tank capacity	60L/60L	Clean/Rinse Filter	1um/1um
Liquid tank/water tank capacity		Power/air source	AC380V,50/60HZ,28KW/0.5~0.7Mpa
Cleaning time	3~15min (adjustable)	weight	730KG
Rinse time	1~2min		
Drying time	3~6min	Machine size	L1300*W1400*H1950 (mm)
Cleaning, rinsing pressure	4~5kg/cm2		
Cleaning fluid	water based cleaning fluid		
Rinse liquid	Industrial pure water		
Drying method	hot air drying		
Liquid heating temperature	0~60°C		
Drying temperature	0~90°C		
Cleaning heating power	9KW		

(5) Features

1. Open loop and closed loop methods, suitable for cleaning SMT steel mesh, copper mesh, resin mesh; misprinted PCB; PCBA, etc.
2. Unique motion mechanism design - the steel mesh moves forward and backward, and the spray rod and air knife are fixed, making the machine run more stable.
3. The water-based cleaning fluid is circulated and filtered in real time to extend the saturation time of the pollutant load and is suitable for precision steel mesh cleaning.
4. Large flow 4 air knife system, hot air drying quickly.
5. The overall body is made of 304 stainless steel, which is resistant to acid and alkali corrosion and is sturdy and durable.
6. One-touch operation, cleaning, rinsing and drying can be completed automatically at one time according to the set program.
7. The cleaning room is equipped with a visualization window, so the cleaning process can be seen at a glance.
8. At the end of cleaning, compressed air is used to recover the residual chemical liquid in the pipes and pumps, effectively saving 50% of the cleaning solution.
9. Color touch screen, PCL control, runs according to program; parameters such as solution temperature, cleaning time, rinsing times/time, rinsing temperature, drying time, drying temperature, resistivity monitoring and other parameters can be set.

Stainless steel washing room
Touch screen and PLC panel
Closed loop cleaning system
heating for rinsing and pre-rinsing
heating for cleaning
hot air drying
Stainless steel covers

Optional function

traceability software: barcode reading

Industrial computer, MES

Welcome inquiry

- 1, Please visit : www.smthelp.com
- 2, Find us more: <https://www.facebook.com/autoinsertion>
- 3, Know more our team: <https://cn.linkedin.com/in/ming-gan118/>
- 4, Welcome to our factory in Shenzhen China
- 5, See more machine working video, please Youtube: Auto Insertion
- 6, Google: Auto+insertion, to get more informations
- 7, Looking forward to your email: yis@smthelp.com
8. Wechat/Whatsapp/skype: +86 13825296910