

Features:

- Pneumatic operating, no electronic
- Used for cleaning solder paste, glue, etc
- Whole machine using 304 Stainless steel
- Cleaning in closed-loop, lower consumption
- One-button operation



Pneumatic diaphragm pump



Pneumatic timer

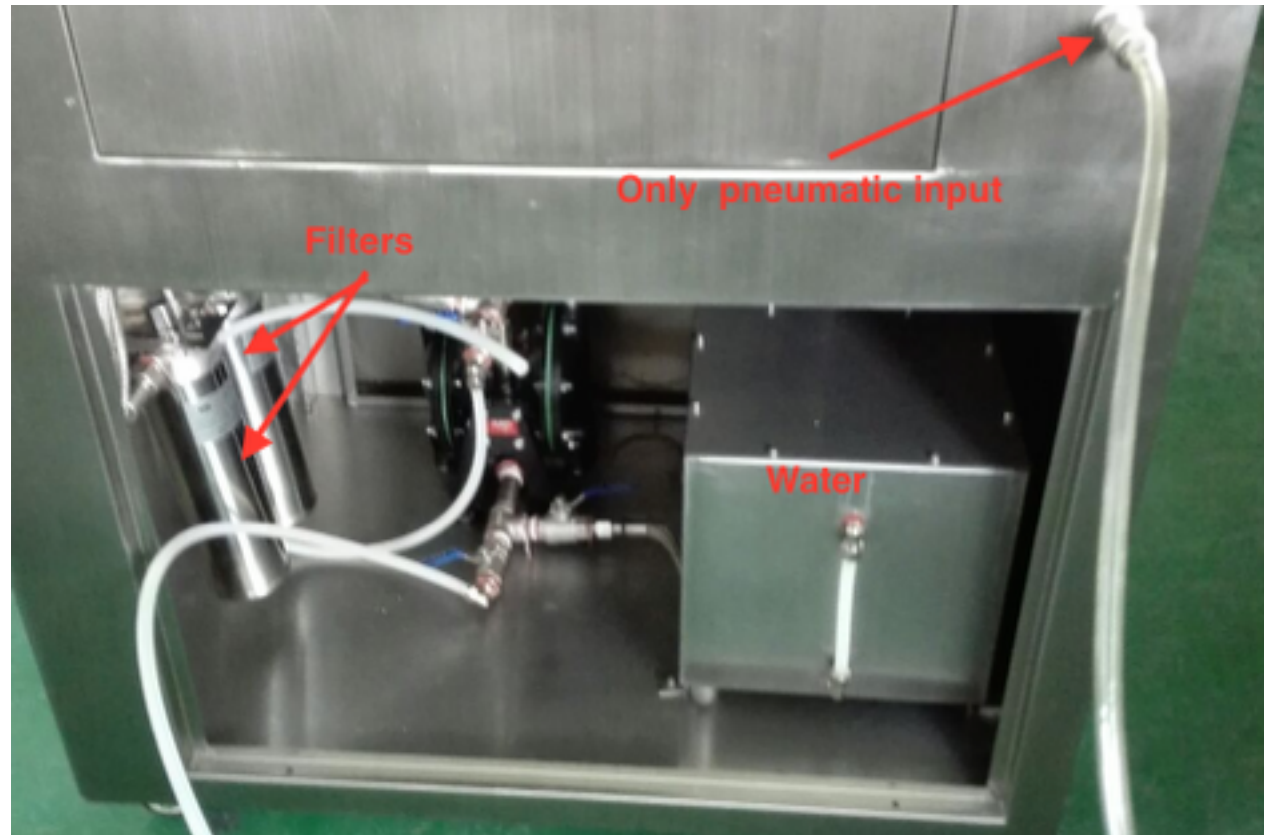


Pneumatic switch

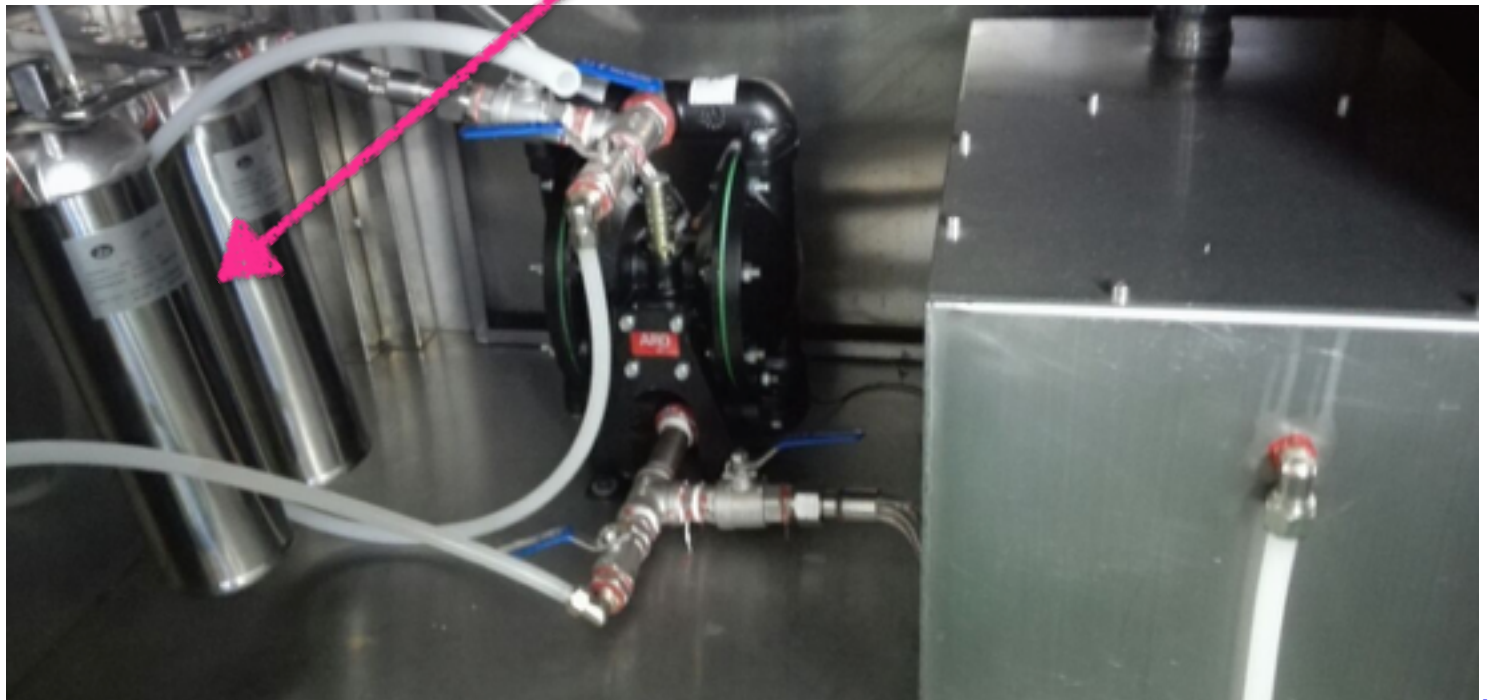


Lower consumption

- Only Pneumatic
- Closed-loop water



2 Filters (cost \$40.00) cleaning >200 screens



Simple operation

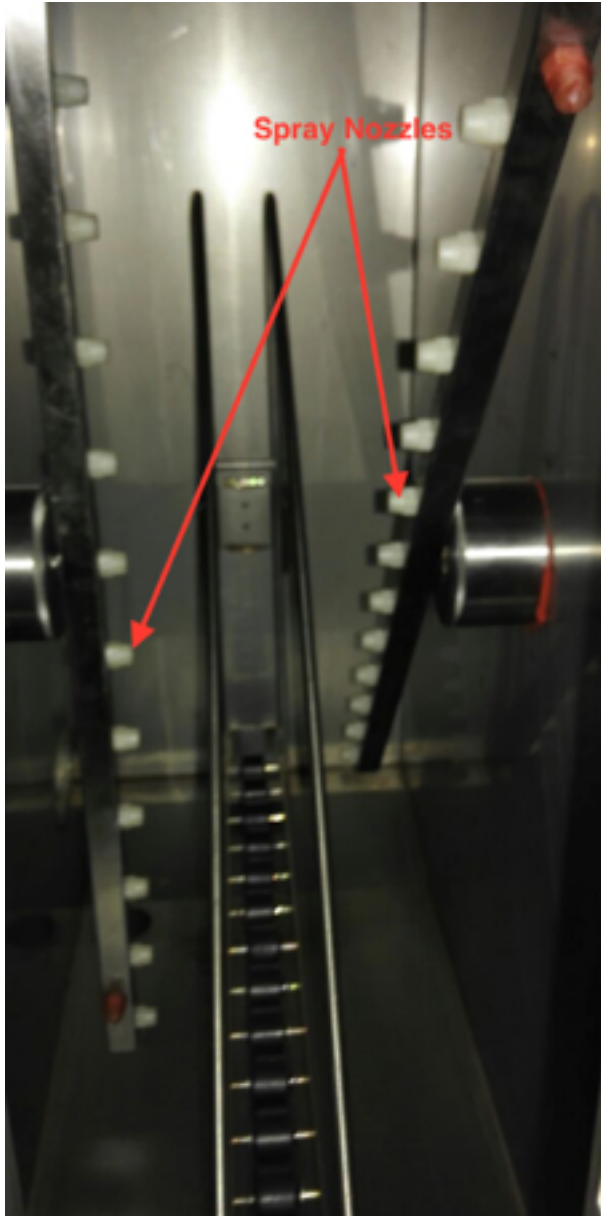
3 steps to operate:

— set cleaning time

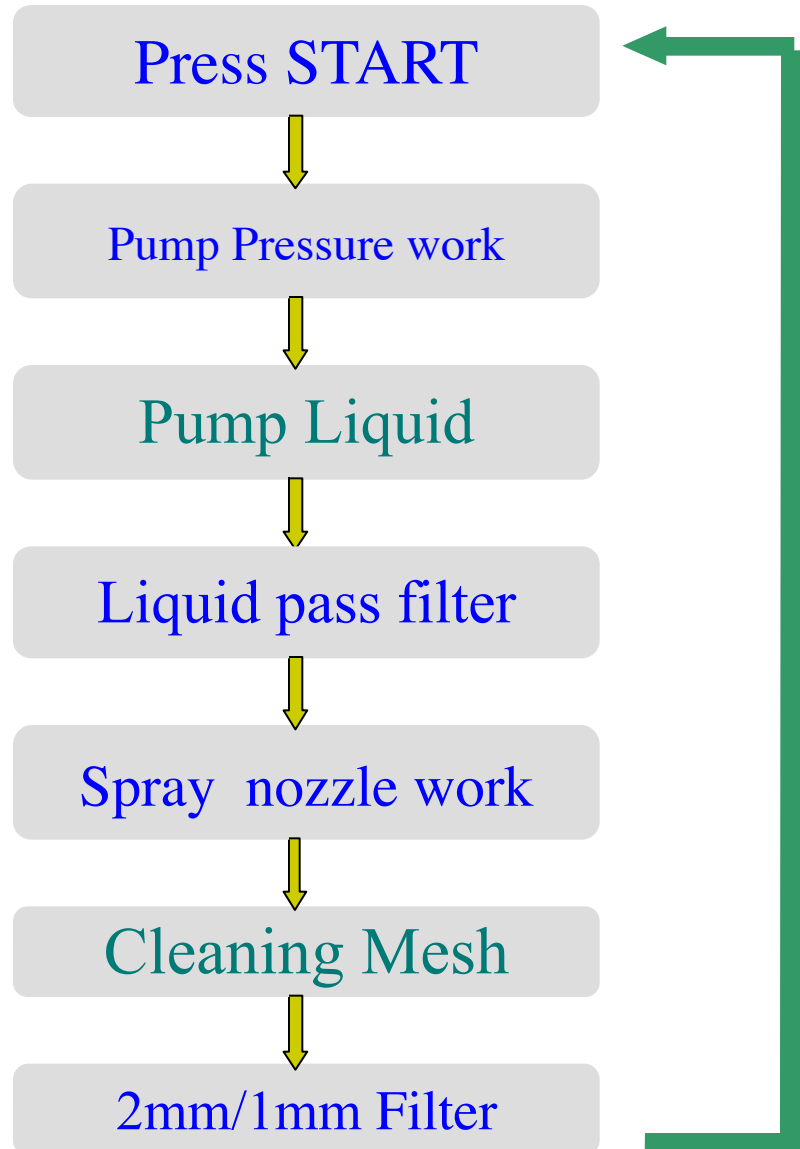
— set Drying time

— press START

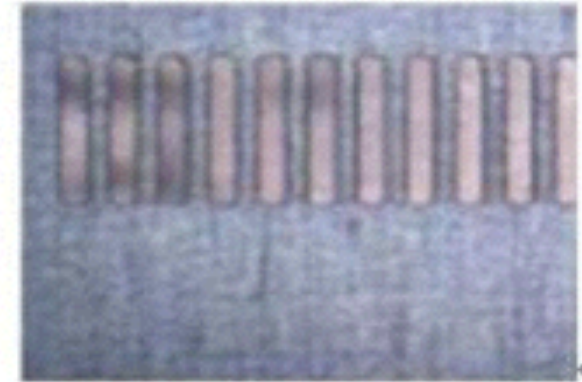
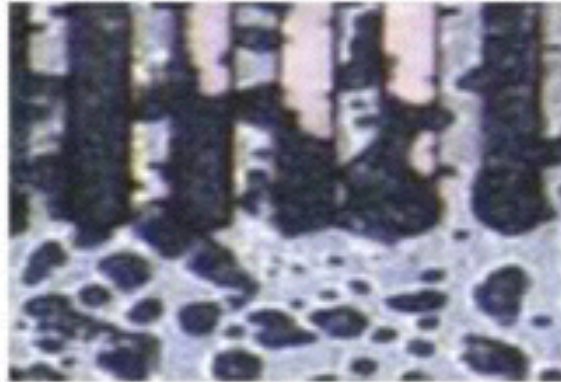
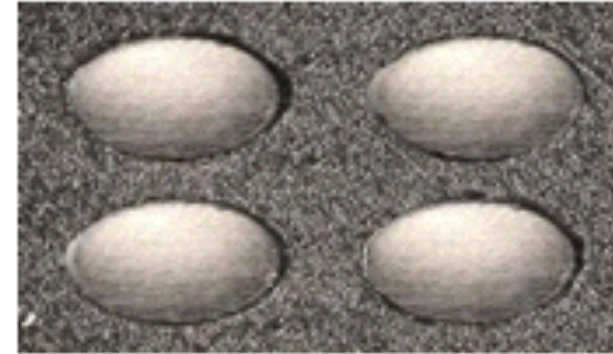
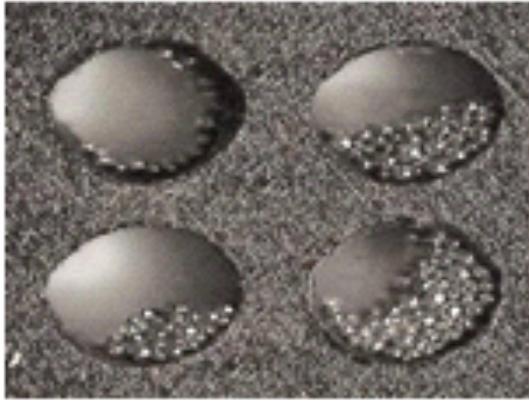




Cleaning Flow Chart



before and after cleaning



Before cleaning

After cleaning

Specifications

Application	stencil,glue screen ,copper screen
Application stencil size	Standard 29 inch and below
Clean liquid capacity	Max 50L ,Min 20 L
Cleaning fluid volume	40L
Cleaning mothed	Rotary double side pressure injection and high pressure air praying (cleaning and drying)
Clean time	2~4 min(stencil and copper net)
Rinse time	2~4 min(stencil and copper net)
Dry time	2~5 min
External air supply	0.4Mpa~0.6Mpa
Air consumption	400~600L/Min*2
Air outlet size	Φ125*25mm
Weight	320Kg
Dimension	980mm(L)*700mm(W)*1730mm(H)
Tin filter mothed	Three class filter(10μm,5μm,1μm)