

SME800 Electric Stencil Cleaning Machine

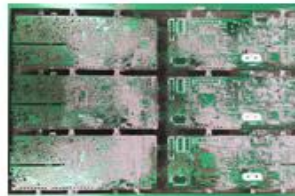


APPLICATIONS

Clean solder paste stencil;
Clean red glue stencil, Resin mask, Copper mask;
Clean misprinted PCB;
Clean Big size PCBA.
Clean squeegee



Solder paste and red glue stencil



Misprinted PCB



Squeegees



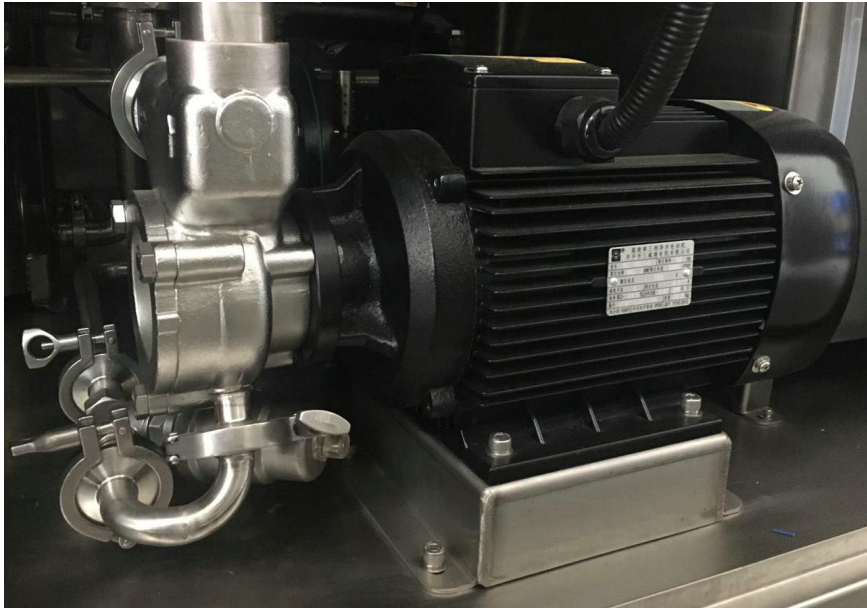
PCBA

The top stable cleaning mechanism



Stencil moves back and forth while 4 spray rods and air knives are fixed. No soft liquid hose and air hose bend and frequently wear down

Electric pump and air pump



High quality Nanfang electric pump

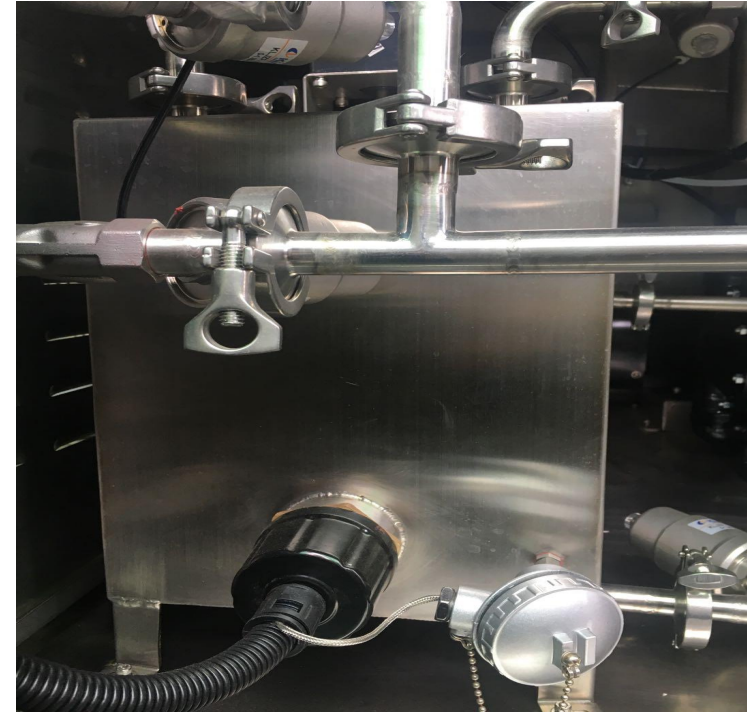


Ingersoll Rand air pump for liquid and water automatically add and discharge

Filters and liquid tanks



Clean and rinse system are equipped with real-time filtering function, no solder paste ball goes back to stencil, mis-print PCB and PCBA again together with liquids and water

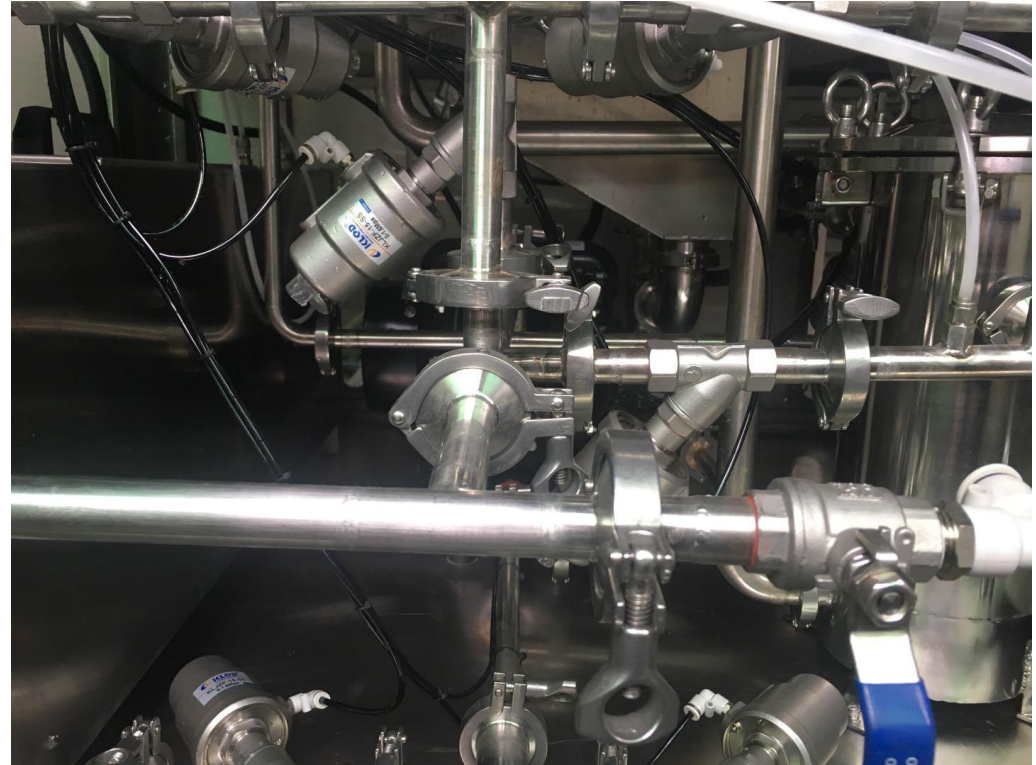


Clean liquid tank and rinse water tank are equipped with heat and temperature control function and 4-level liquid switches

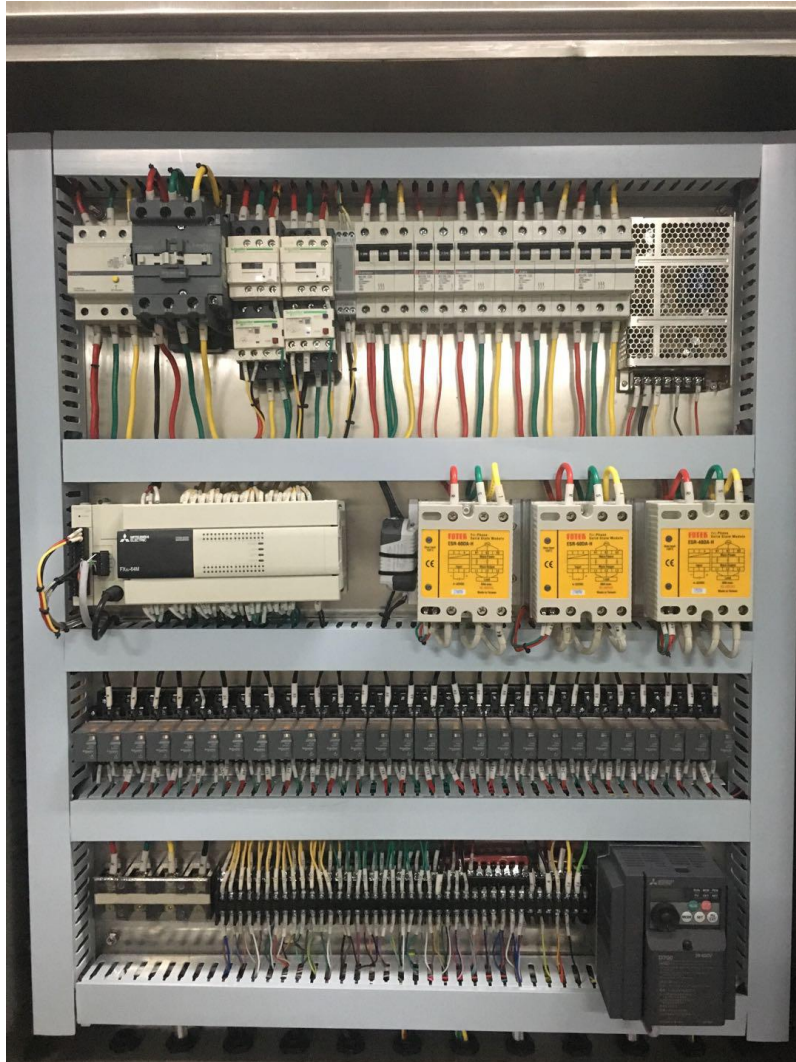
Air blower and pipe system



4KW air blower, right for frequently start and shut off; high air rate can greatly reduce stencil dry time



Total SUS304 liquid pipes, angle valves, no plastic hose, no need to worry about liquid press on pipe.

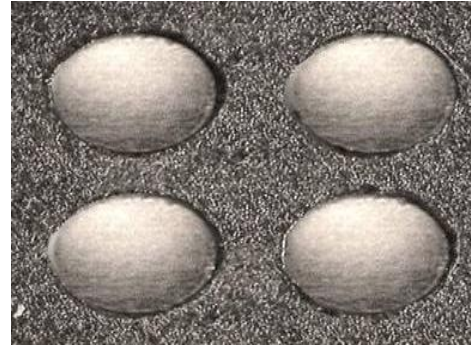
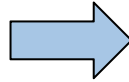
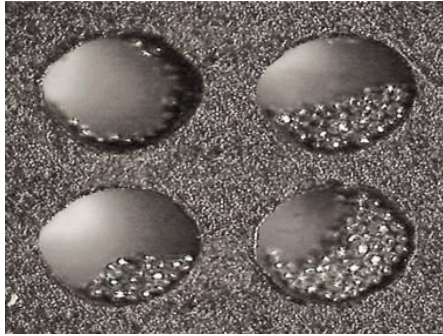
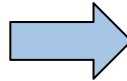
SME800 details**Famous electric parts and reliable control system**

Mitsui: PLC, TP, Inverter, Module,
Breaker, Leakage protection switch;

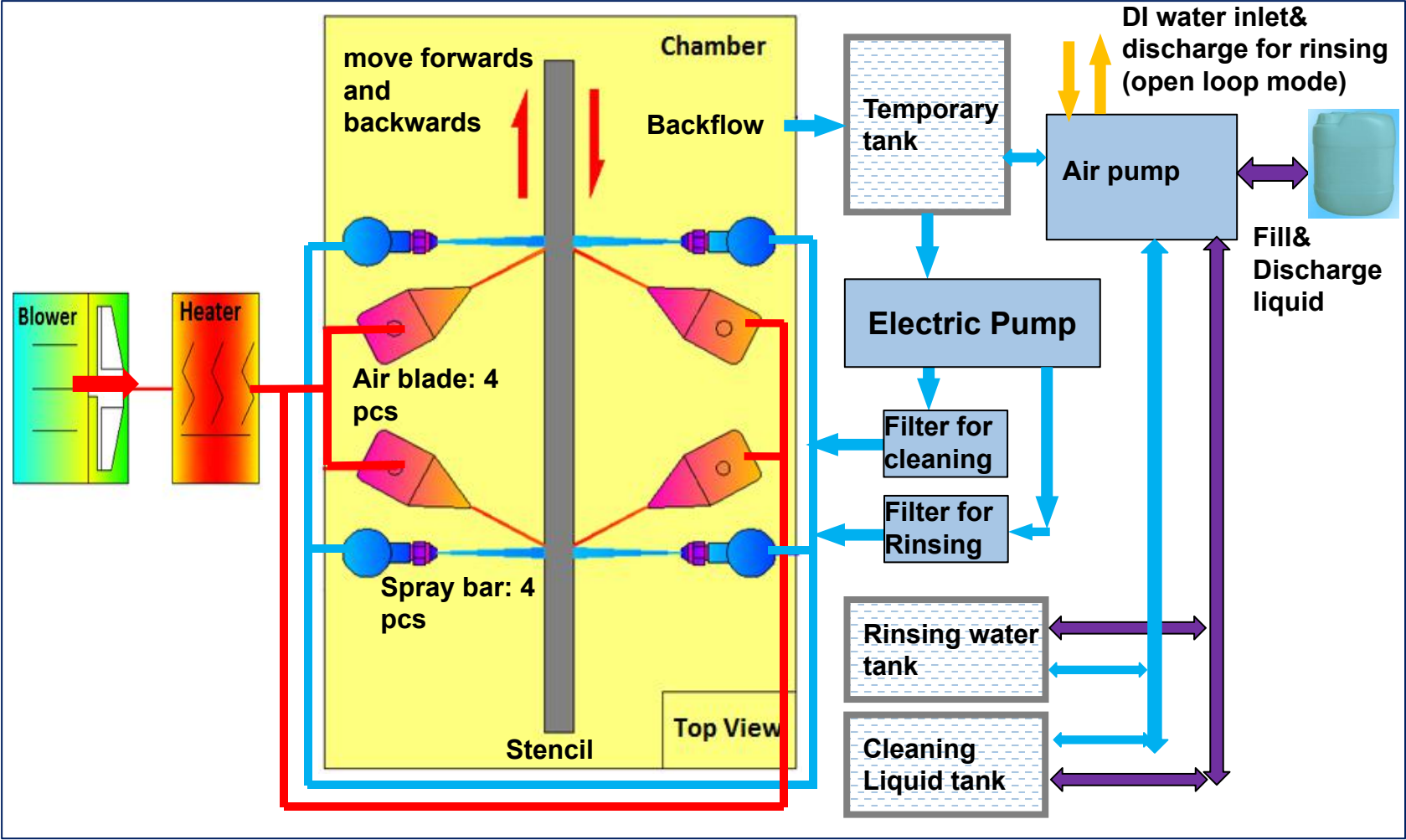
Schneider: Relay, AC Contactor,
Thermal Relay;

Omron: Switching mode power supply,
Sensor ;

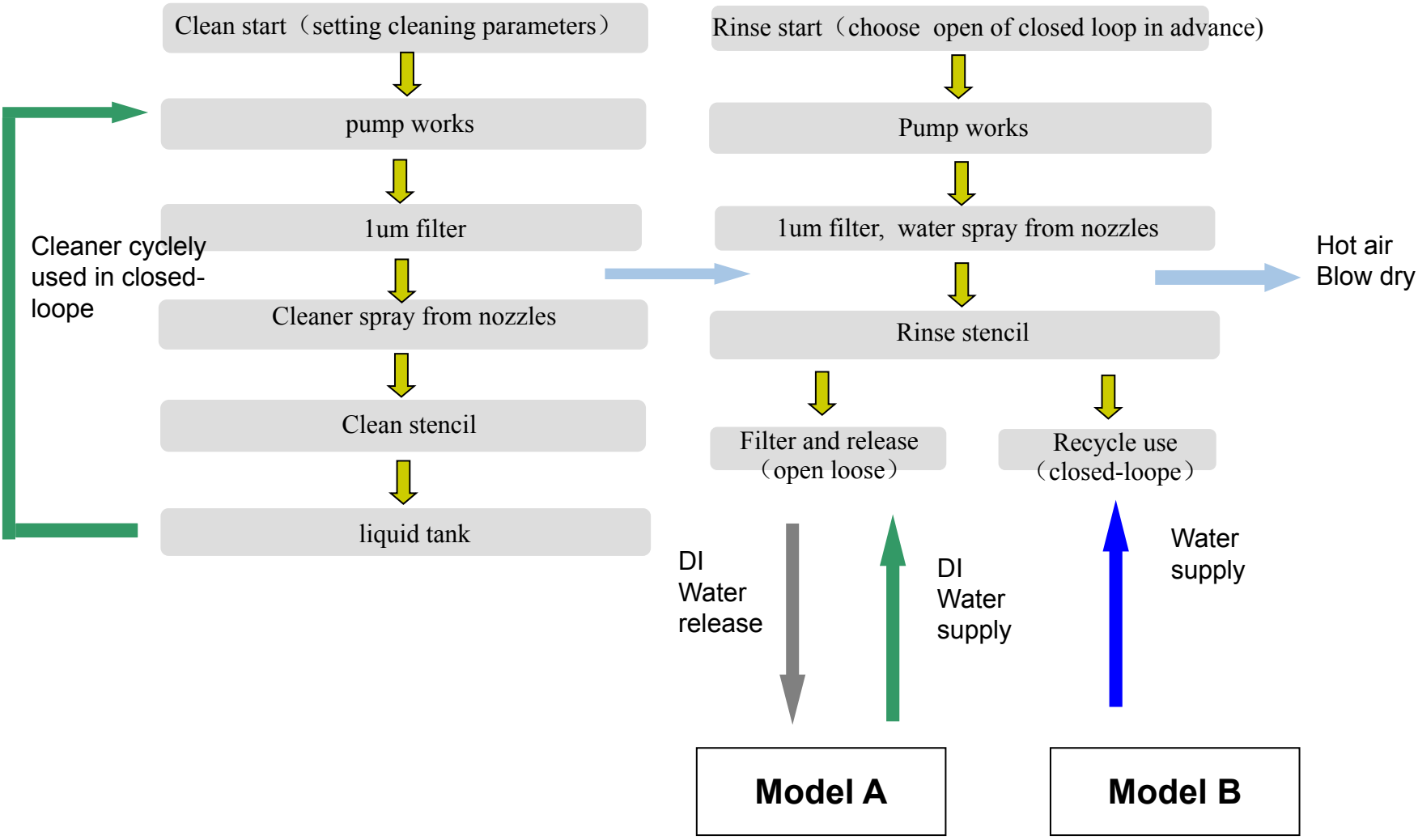
CKD solenoid valves; Fotek SSR; IDEC
keys and Patlite indicator

Before**After****Effectiveness of cleaning solder paste****Effectiveness of cleaning red glue cooper mask**

SME800 Flow chart



SME800 Flow chart



SME800 Specification

No.	Item	Specification	No.	Item	Specification
1	Stencil size	750mm(L) × 750mm(W) × 40mm(H) as max	15	Filter grade	1μm for cleaning, 1 μm for DI water
2	Cleaning agent	aqueous cleaning liquid for cleaning, DI or DM water for rinsing	16	DI water supply (open loop mode)	30~60 L/min (if not work in cyclic mode), ≤0.4mpa
3	Capacity of tank	60L max. (liquid tank and water tank)	17	DI water supply (close loop mode)	N/A. DI water is running in cyclic pipe system.Discharge used water when conductivity is out of specification.
4	Way of cleaning	4 fixed spraying rods, Spray liquid ,stencil moves forwards and backwards by motor	18	Electric pump	4HP stainless steel I pump
5	Way of rinsing	4 fixed spraying bards, spray DI water, stencil moves forwards and backwards by motors	19	Hot air blower	5.5 HP
6	Way of drying	4 hot air blades, blowing hot air	20	Cleaning liquid heater	9KW
7	Recommended cleaning time	2~5 minutes	21	Rinsing water heater	9KW
8	Recommended rinsing time	2~3 minutes	22	Dry heater	6KW
9	Recommended drying time	3~6 minutes	23	Total power	about 33KW, 13KW at average when working
10	Estimated full cycle time	12~15 minutes	24	Exhaust hose size	Φ123mm
11	Conductivity meter	0~18 Mega ohms)	25	Power inlet	380VAC, 3 Phase, 50HZ , 90A
12	Liquid or water heat temp	room temperature to 60oC	26	Air supply	0.45~0.7Mpa
13	Dry air heat temp	room temperature to 90oC	27	Weight	720KG
14	Noise	less than 70 dB	28	Dimension	1300mm(L) × 1400mm(W) × 1970mm(H)

Other SMT Cleaning Machine



**S-1688 Pneumatic stencil
cleaning machine**



**Electric stencil
cleaning machine**



**Fixture/Pallet
cleaning machine**



**Mis-print PCB cleaning
machine**



**Squeegee cleaning
machine**



**Nozzle cleaning
machine**

Screen Cleaning Machine



**General screen
cleaning machine**



**PCB green ink screen
cleaning machine**



**Water ink screen
cleaning machine**



**Screen auto
developing machine**



**Screen auto
stripping machine**



**Ink squeegee
cleaning machine**

PCBA Cleaning Machine



**PCBA offline
cleaning Machine**



**PCBA DI water in line
cleaning machine**



**PCBA in line cleaning
machine**



PCBA in line cleaning machine



DI water machine

Best After-sales service

- **Worldwide Support**
- **Free Installation/ Training**
- **1 day lead-time (spare parts)**
- **1 Month customize solution**



Welcome inquiry

- 1, Please visit : www.smthelp.com
- 2, Find us more: <https://www.facebook.com/autoinsertion>
- 3, Know more our team: <https://cn.linkedin.com/in/smtsupplier>
- 4, Welcome to our factory in Shenzhen China
- 5, Google: Auto+Insertion
- 6, See machine working video: youtube - Auto Insertion
- 7, Looking forward to your email: info@smthelp.com