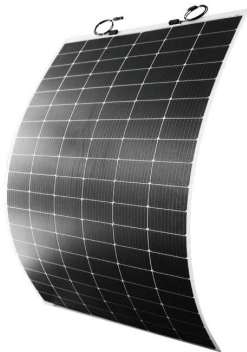




FLEXIBLE MONOCRYSTALLINE SOLAR PANEL PVS-350W-FM6



Introduction:

Redefined the high-efficiency module series by integrating 166mm silicon wafers with flexible cell technologies. Our panel combined creative technology effectively and extremely improved the module efficiency and power output.

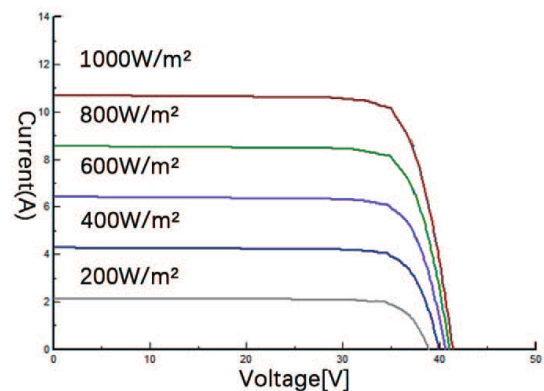
Key Features:

- Light Weight, Frameless, Glass free
- Flexibility, Special manufacturing process and material provide bending ability
- Aesthetic Appearance, Half cell design, High Consistency
- Easy Installation, Light weight, easy for handling
- Customized, Provide customized service

Electrical Characteristics: STC:Irradiance 1000 W/m² module temperature 25 C AM=1.5

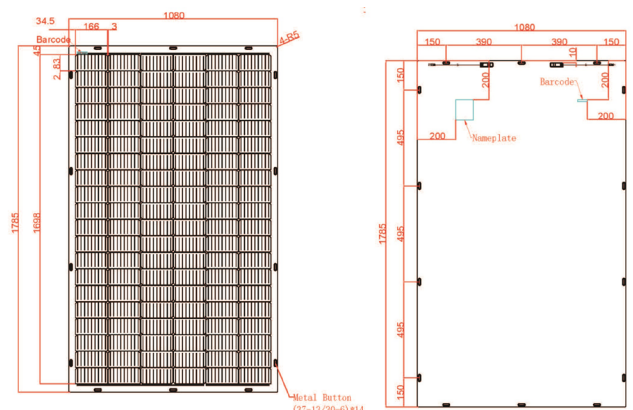
Module Type	PVS-350W-FM6
Maximum Power (Pmp)	350W
Open Circuit Voltage (Voc)	41.40V
Short Circuit Current (Isc)	10.70A
Maximum Power Voltage (Vmp)	34.70V
Maximum Power Current (Imp)	10.09A
Module Efficiency at STC(%)	18.16%
Maximum System Voltage	1000VDC
Maximum Series Fuse Rating	20A
Power Tolerance	0~+3%

Current-Voltage Characteristic (I-V Curve)



Mechanical Specifications:

External Dimensions	1785x1080x3 mm 1785x1080x18 mm(J-Box included)
Solar Cells	Mono 120cells
Cell Size	166x83 mm
Junction Box	IP67
Output Cables	4.0mm ²
Weight	6.1kg
Mechanical Load	Front side 5400Pa Rear side 2400Pa
Packing	70pcs/pallet 420pcs/20HQ,1820pcs/40HQ



Product warranty:

12 years guarantee on product material and workmanship
 25 years guarantee on Liner power output

Temperature ratings (STC):

Temperature Coefficient of Isc	+0.020%/°C
Temperature Coefficient of Voc	-0.280%/°C
Temperature Coefficient of Pmax	-0.380%/°C

Quality Standard: IEC61215-1-1:2021, IEC61730-1 :2018, IEC61730-2:2018, Fire safety Class C