

## CPT Aluminum carport



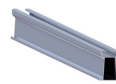
### Technical specification

Installation place: Cement roof or flat ground  
Fixed way: Ground screw/Concrete base  
Installation angle: 5-45°  
Standard wind: 36m/s  
Standard snow: 800mm  
Design standard: JISC 8955:2017  
GB50009-2012, GB50797-2012  
Main material: AL6005-T5  
Fastener material: SUS 304

### Advantages

- Suit for all kinds of scale PV power station
- Pre-installed as more as possible
- High-strength aluminum
- Ultra light-weight design
- Easy to install

### Main Components



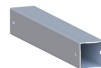
Rail



Beam



Longitudinal beam



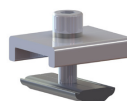
Column



Adjustable gasket1



Adjustable gasket 2



Clip

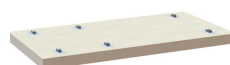


Joiner

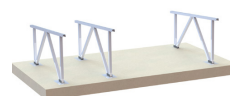


Foundation

### Installation step



1. Install the pile



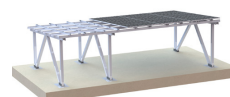
2. Install the column



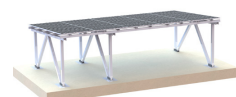
3. Install the beam



4. Install the rail



5. Install the panel



6. Complete