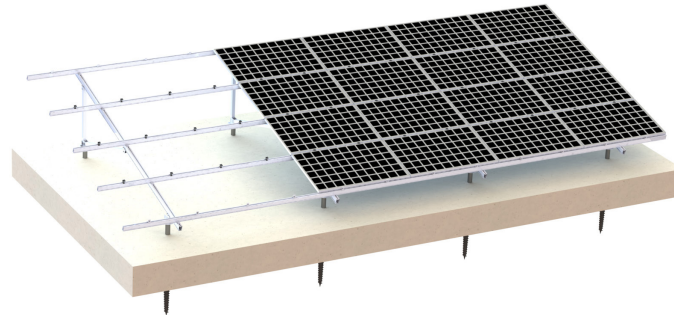




PGA S-I Aluminum ground mounting system



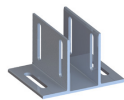
Technical specification

Installation place: Cement roof or flat ground
Fixed way: Ground screw/Concrete base
Installation angle: 5-45°
Standard wind: 35m/s
Standard snow: 500mm
Design standard: JISC 8955:2017
GB50009-2012, GB50797-2012
Main material: AL6005-T5
Fastener material: SUS 304

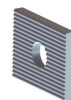
Advantages

- Suit for all kinds of scale PV power station
- High-strength aluminum
- Patent design
- Ultra light-weight design
- Easy to install

Main Components



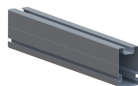
Foundation



Adjustable gasket 1



Mid clamp



Beam



Adjustable gasket 2



End clamp

