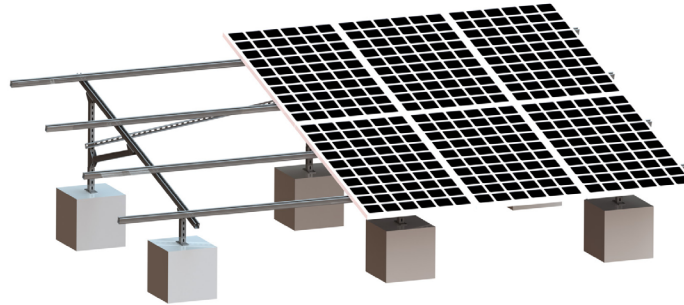




PGC Steel ground mounting system



Technical specification

Installation place: Cement roof or flat ground
Fixed way: Ground screw/Concrete base
Installation angle: 0-35°
Standard wind: 31m/s
Max wind: 55m/s
Standard snow: 800mm
Design standard: JISC 8955:2017
GB50009-2012, GB50797-2012
Main material: Q235B
Fastener material: SUS 304

Advantages

- Strong compatibility
- High cost performance
- Patent design
- High-strength carbon steel
- Easy to install

Main Components



Rail_beam



Triangle joiner



Rear diagonal tie



Diagonal support



Column foundation



Column

Installation step



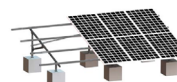
1. Install the pile/concrete base



4. Install the rail



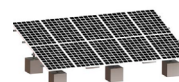
2. Install the column



5. Install the panel



3. Install the beam



6. Complete