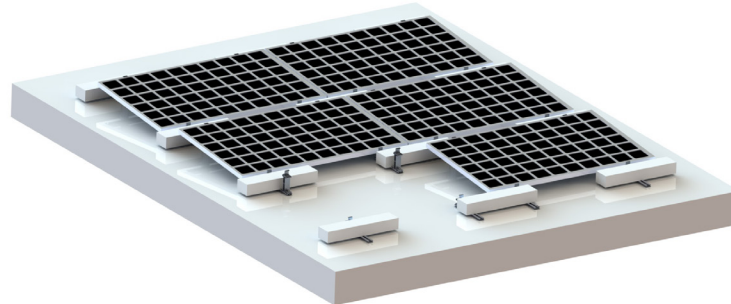


## PRA3-A4 Concrete roof mounting system



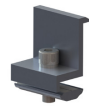
### Technical specification

Installation place: Cement roof  
Fixed way: Concrete base  
Installation angle: 5°/10°  
Standard wind: 35m/s  
Standard snow: 1200mm  
Design standard: JISC 8955:2017  
GB50009-2012, GB50797-2012  
Main material: AL6005-T5  
Fastener material: SUS 304

### Advantages

- High-strength aluminum
- Ultra light-weight design
- Easy to install

### Main Components



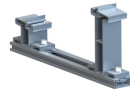
End clamp



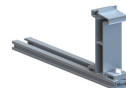
Clip



Front support

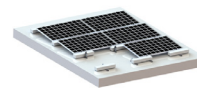
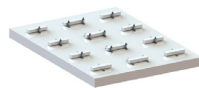


Mid support



Rear support

### Installation effect 5°



### Installation effect 10°

