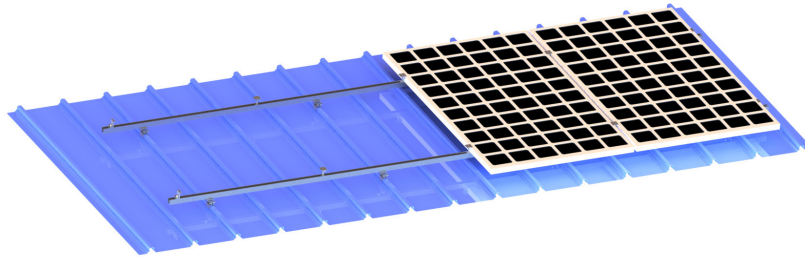




PRA 2- CR Cliplok tin roof mounting system



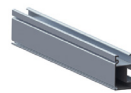
Technical specification

Installation place: Cliplok/Seamlok Tin roof
Fixed way: Clamp
Installation angle: 0°
Max wind: 88m/s
Max snow: 800mm
Design standard: JISC 8955:2017
GB50009-2012, GB50797-2012, AS/NZS1170
Main material: AL6005-T5
Fastener material: SUS 304

Advantages

- High-strength aluminum
- Ultra light-weight design
- Easy to install

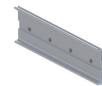
Main Components



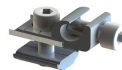
Rail



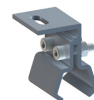
End clamp



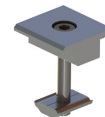
Rail joiner



Earthing lug



Clamp



Mid clamp