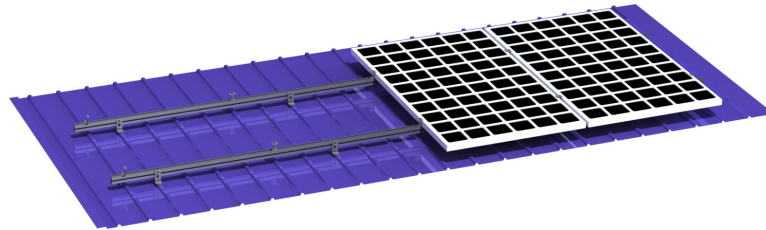




PRA 2- TD T Type Tin roof mounting system



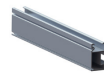
Technical specification

Installation place:T-type Tin roof
Fixed way:L-feet/ T-clamp
Installation angle:0°
Max wind:88m/s
Max snow: 800mm
Design standard: JISC 8955:2017
GB50009-2012, GB50797-2012,AS/NZS1170
Main material:AL6005-T5
Fastener material:SUS 304

Advantages

- High-strength aluminum
- Ultra light-weight design
- Easy to install

Main Components



Rail



Mid clamp



Rail joiner



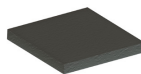
End clamp



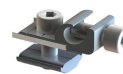
L-foot



Earthing plate



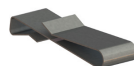
Rubber



Earthing lug



Tapping screw



Cable clip