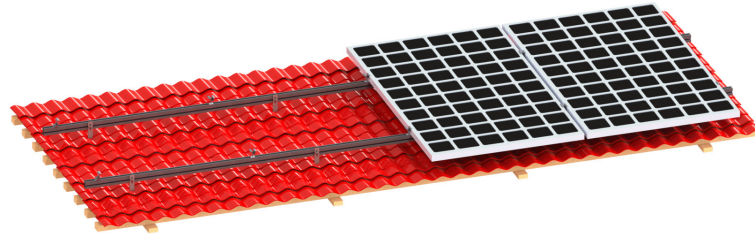


## PRA 1- RF2 Tile roof mounting system



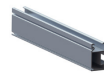
### Technical specification

Installation place: Tile roof  
Fixed way: Hook  
Installation angle: 0°  
Standard wind: 35m/s  
Standard snow: 200mm  
Max snow: 1200mm  
Design standard: JISC 8955:2017  
GB50009-2012, GB50797-2012  
Main material: AL6005-T5  
Fastener material: SUS 304

### Advantages

- High-strength aluminum
- Ultra light-weight design
- Easy to install

### Main Components



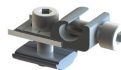
Rail



Earthing plate



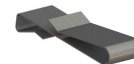
Rail joiner



Earthing lug



Hook



Cable clip



Mid clamp



End clamp