

Monocrystalline solar panel ***PVS-450W/455W-M6H(450W-455W)***



PVSY ENERGY GROUP LIMITED is the professional manufacturer of solar panel, solar system and solar lighting.

We are not only offer these solar products, but also offer the whole complete solar system to our customers. With our professional solution and best offer, customers can save their total cost of the whole solar system.

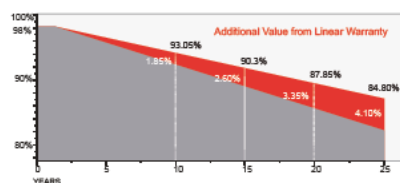
We made our system in modularity, it is easy for our customers to maintain the system and it is easy for us to offer the best after sales service.

Redefined the high-efficiency module series by integrating 166mm silicon wafers with multi-busbar and half-cut cell technologies. Our panel combined creative technology effectively and extremely improved the module efficiency and power output.

● KEY FEATURES

- Less mismatch to get more power
- Less power loss by minimizing the shading impact
- Competitive low light performance
- 3 times EL test to ensure best quality
- Ideal choice for utility and commercial scale projects by reduced BoS and improved ROI
- PVEL Outstanding reliability proven by PVEL for stringent environment condition:
 - Sand, acid, salt and hail stones
 - 2400 Pa wind load and 5400 Pa snow load
 - Anti-PID

● WARRANTY

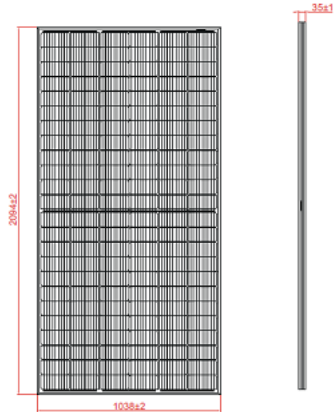


15 YEARS Guarantee on product material and workmanship

25 YEARS Linear power output warranty

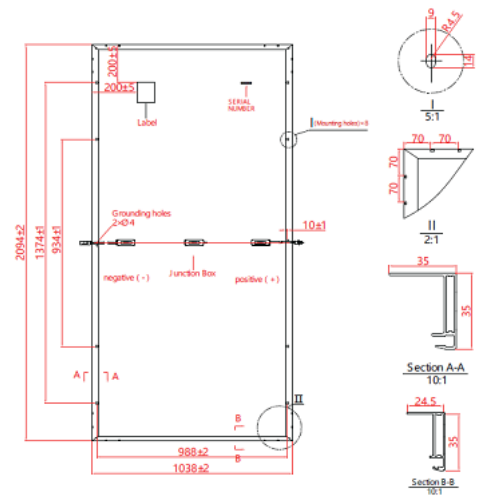
Electrical Characteristics:

Module Type	PVS-450W-M6H	PVS-455W-M6H
Maximum Power(Pmp)	450	455
Open Circuit Voltage (Voc)	50.1	50.3
Short Circuit Current (Isc)	11.41	11.48
Maximum Power Voltage (Vmp)	41.8	42
Maximum Power Current (Imp)	10.77	10.84
Module Efficiency at STC(ηm)	20.70	20.93
Power Tolerance	(0,+3%)	
Maximum System Voltage	1500VDC	
Maximum Series Fuse Rating	20A	
STC: Irradiance 1000 W/m ² module temperature 25°C AM=1.5		
Power measurement tolerance: +/-3%		



Temperature Characteristics:

Pmax Temperature Coefficient	-0.35 %/°C
Voc Temperature Coefficient	-0.27 %/°C
Isc Temperature Coefficient	+0.05 %/°C
Operating Temperature	-40~+85 °C
NOCT	45±2 °C



Mechanical Specifications:

External Dimensions	2094x1038x35 mm
Weight	23.5kg
Solar Cells	PERC Mono (144pcs)
Front Glass	3.2mm tempered glass
Frame	Anodized aluminium alloy
Junction Box	IP68, 3 diodes
Output Cables	4.0mm ²
Mechanical Load	Front side 5400Pa Rear side 2400Pa

Packing Configuration:

Container	20'GP	40'HQ
Pieces per Pallet	31+4	31+2
Pallets per Container	5	22
Pieces per Container	175	726

* 31+2 and 31+4 pieces per pallet is the special package which only suits for container transport.

I-V Curve

