

**Monocrystalline solar panel**  
**PVS-660W/670W-M12H(660W-670W)**









PVSY ENERGY GROUP LIMITED is the professional manufacturer of solar panel, solar system and solar lighting.

We are not only offer these solar products, but also offer the whole complete solar system to our customers. With our professional solution and best offer, customers can save their total cost of the whole solar system.

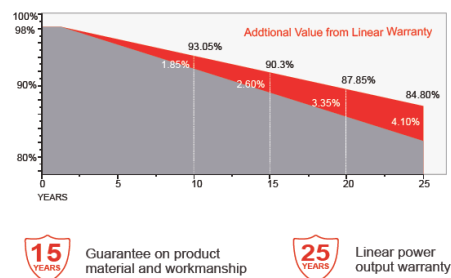
We made our system in modularity, it is easy for our customers to maintain the system and it is easy for us to offer the best after sales service.

Redefined the high-efficiency module series by integrating 210mm silicon wafers with multi-busbar and half-cut cell technologies. Our panel combined creative technology effectively and extremely improved the module efficiency and power output.

**KEY FEATURES**

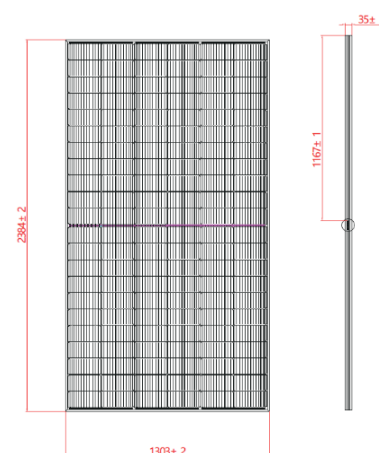
-  Less mismatch to get more power
-  Less power loss by minimizing the shading impact
-  Competitive low light performance
-  3 times EL test to ensure best quality
-  Ideal choice for utility and commercial scale projects by reduced BoS and improved ROI
-  Outstanding reliability proven by PVEL for stringent environment condition:
  - Sand, acid, salt and hail stones
  - 2400 Pa wind load and 5400 Pa snow load
  - Anti-PID

**WARRANTY**



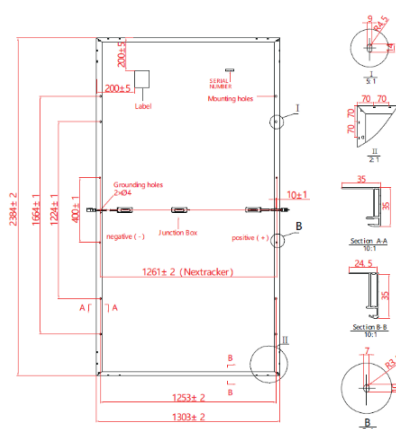
### Electrical Characteristics:

Module Type	PVS-660W-M12H	PVS-670W-M12H
Maximum Power(Pmp)	660	670
Open Circuit Voltage (Voc)	43.9	44.3
Short Circuit Current (Isc)	19.14	19.24
Maximum Power Voltage (Vmp)	36.82	37.22
Maximum Power Current (Imp)	17.93	18.01
Module Efficiency at STC(ηm)	21.25	21.57
Power Tolerance	(0,+3%)	
Maximum System Voltage	1500VDC	
Maximum Series Fuse Rating	25A	
STC: Irradiance 1000 W/m <sup>2</sup> module temperature 25°C AM=1.5		
Power measurement tolerance: +/-3%		



### Temperature Characteristics:

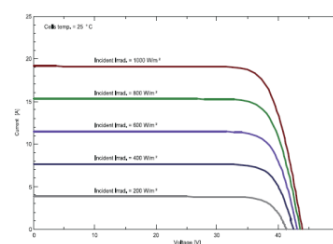
Pmax Temperature Coefficient	-0.35 %/°C
Voc Temperature Coefficient	-0.27 %/°C
Isc Temperature Coefficient	+0.05 %/°C
Operating Temperature	-40~+85 °C
NOCT	45±2 °C



### Mechanical Specifications:

External Dimensions	2384x1303x35 mm
Weight	34 kg
Solar Cells	PERC Mono (132pcs)
Front Glass	3.2mm tempered glass
Frame	Anodized aluminium alloy
Junction Box	IP68, 3 diodes
Output Cables	4.0mm <sup>2</sup>
Mechanical Load	Front side 5400Pa Rear side 2400Pa

### I-V Curve



### Packing Configuration:

Container	20'GP	40'HQ
Pieces per Pallet	35	31
Pallets per Container	4	18
Pieces per Container	140	558

