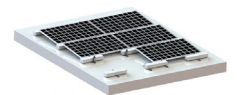
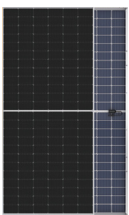
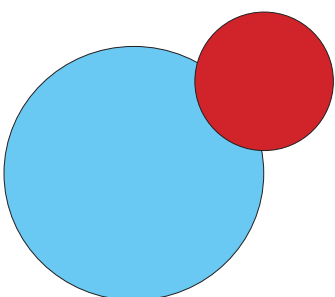


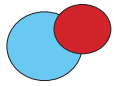


IPower the future
Lightening tomorrow



LITHIUM BATTERY SOLAR ENERGY STORAGE SYSTEM CATALOGUE 2024





Shanghai Pvsys New Energy Co.,Ltd is the professional manufacturer of solar panel,solar storage system in the market for more than 13 years.

With our newest technology of Topcon,HJT, our customers can get higher efficiency with best performance through the lifespan of the solar panel.

Our solar storage system is with built in solar hybrid inverter,mppt controller and LifePO4 battery with BMS(Battery Management System), it can be used in No-power areas and it also helps our cusotmer to save their energy bill.We are offering the customization of our solar system based on different needs from our customers. We blieve that "a suitable one for you!"

We have acquired the certificates of CE,IEC61215-1-1:2021,IEC61730-1:2018,IEC 61730-2:2018 and Fire safety Class.

With high quality solar products and best service,we have customers from Italy,Germany,Sweden,Spain,England,Dub ai,South Africa,New Zeland,Australian,Japan,Indonesia.etc more than 50 countries and areas.

We always seem "Quality is our life", without good quality,we can not go any further. We blieve with our effort,we will make the world better.



700KW in Japan



300KW in Japan



13KW in Japan



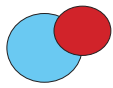
6KW in Tahiti



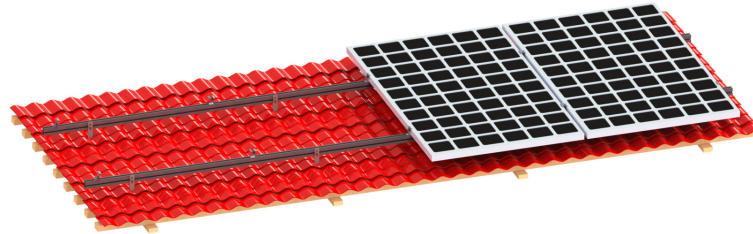
14.76KW in Sweden



39.6KW-15.12kWh in Iraq



PRA 1- RF2 Tile roof mounting system



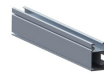
Technical specification

Installation place: Tile roof
Fixed way: Hook
Installation angle: 0°
Standard wind: 35m/s
Standard snow: 200mm
Max snow: 1200mm
Design standard: JISC 8955:2017
GB50009-2012, GB50797-2012
Main material: AL6005-T5
Fastener material: SUS 304

Advantages

- High-strength aluminum
- Ultra light-weight design
- Easy to install

Main Components



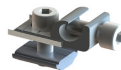
Rail



Earthing plate



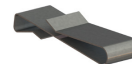
Rail joiner



Earthing lug



Hook



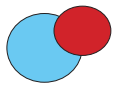
Cable clip



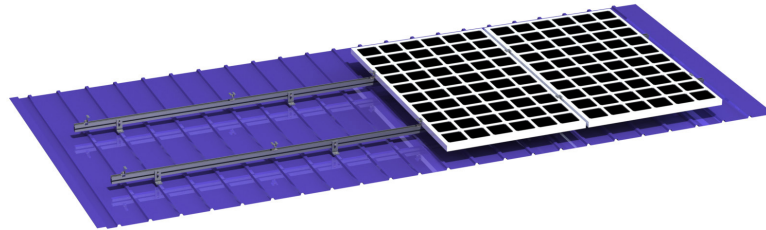
Mid clamp



End clamp



PRA 2- TD T Type Tin roof mounting system



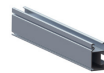
Technical specification

Installation place:T-type Tin roof
Fixed way:L-feet/ T-clamp
Installation angle:0°
Max wind:88m/s
Max snow: 800mm
Design standard: JISC 8955:2017
GB50009-2012, GB50797-2012,AS/NZS1170
Main material:AL6005-T5
Fastener material:SUS 304

Advantages

- High-strength aluminum
- Ultra light-weight design
- Easy to install

Main Components



Rail



Mid clamp



Rail joiner



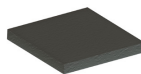
End clamp



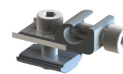
L-foot



Earthing plate



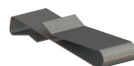
Rubber



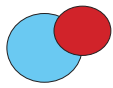
Earthing lug



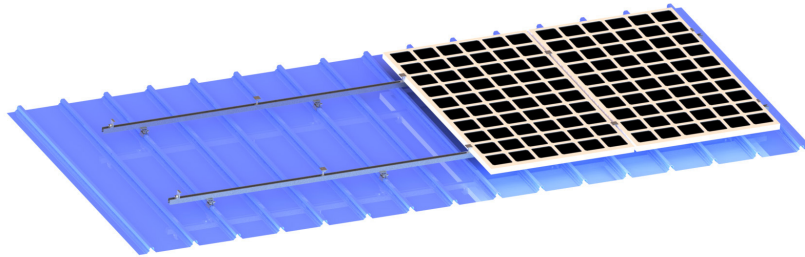
Tapping screw



Cable clip



PRA 2- CR Cliplok tin roof mounting system



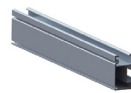
Technical specification

Installation place: Cliplok/Seamlok Tin roof
Fixed way: Clamp
Installation angle: 0°
Max wind: 88m/s
Max snow: 800mm
Design standard: JISC 8955:2017
GB50009-2012, GB50797-2012, AS/NZS1170
Main material: AL6005-T5
Fastener material: SUS 304

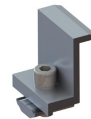
Advantages

- High-strength aluminum
- Ultra light-weight design
- Easy to install

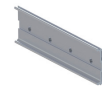
Main Components



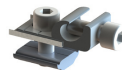
Rail



End clamp



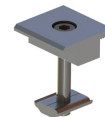
Rail joiner



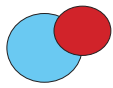
Earthing lug



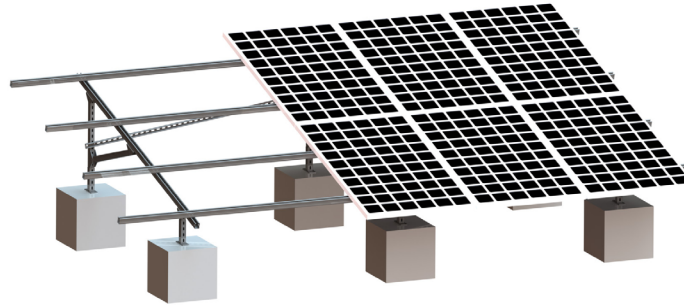
Clamp



Mid clamp



PGC Steel ground mounting system



Technical specification

Installation place: Cement roof or flat ground
Fixed way: Ground screw/Concrete base
Installation angle: 0-35°
Standard wind: 31m/s
Max wind: 55m/s
Standard snow: 800mm
Design standard: JISC 8955:2017
GB50009-2012, GB50797-2012
Main material: Q235B
Fastener material: SUS 304

Advantages

- Strong compatibility
- High cost performance
- Patent design
- High-strength carbon steel
- Easy to install

Main Components



Rail_beam



Triangle joiner



Rear diagonal tie



Diagonal support



Column foundation



Column

Installation step



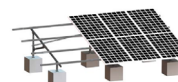
1. Install the pile/concrete base



4. Install the rail



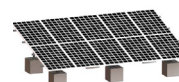
2. Install the column



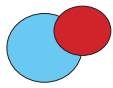
5. Install the panel



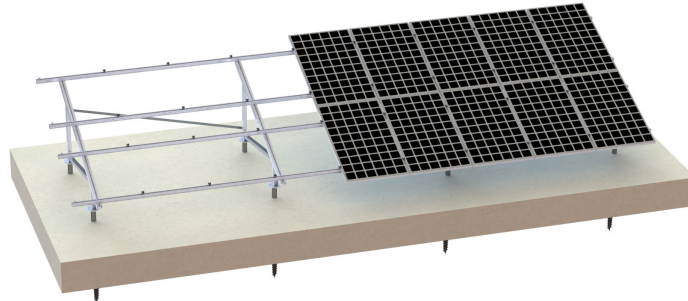
3. Install the beam



6. Complete



PGA 4 Aluminum ground mounting system



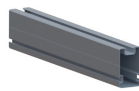
Technical specification

Installation place: Cement roof or flat ground
Fixed way: Ground screw/Concrete base
Installation angle: 5-45°
Standard wind: 35m/s
Max wind: 88m/s
Standard snow: 1200mm
Design standard: JISC 8955:2017
GB50009-2012, GB50797-2012
Main material: AL6005-T5
Fastener material: SUS 304

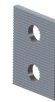
Advantages

- Strong compatibility
- High cost performance
- Patent design
- High-strength carbon steel
- Ultra light-weight design
- Easy to install

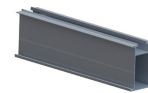
Main Components



Beam



Adjustable gasket



Rail 65



Joiner



Rear diagonal tie



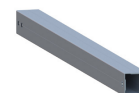
Clip



Foundation



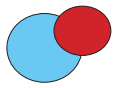
Mid clamp



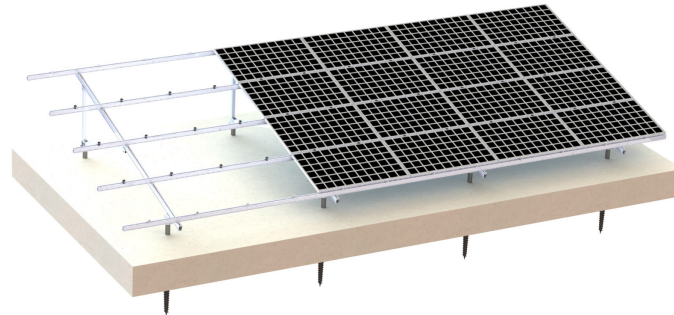
Column



End clamp



PGA S-I Aluminum ground mounting system



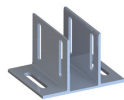
Technical specification

Installation place: Cement roof or flat ground
Fixed way: Ground screw/Concrete base
Installation angle: 5-45°
Standard wind: 35m/s
Standard snow: 500mm
Design standard: JISC 8955:2017
GB50009-2012, GB50797-2012
Main material: AL6005-T5
Fastener material: SUS 304

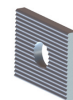
Advantages

- Suit for all kinds of scale PV power station
- High-strength aluminum
- Patent design
- Ultra light-weight design
- Easy to install

Main Components



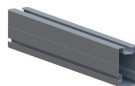
Foundation



Adjustable gasket 1



Mid clamp



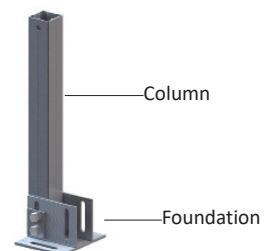
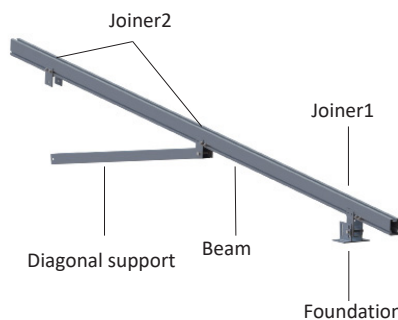
Beam

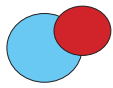


Adjustable gasket 2

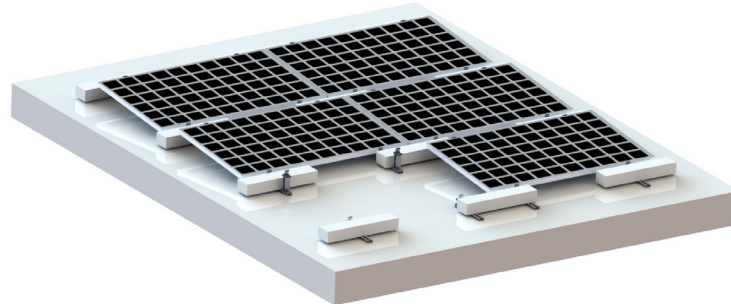


End clamp





PRA3-A4 Concrete roof mounting system



Technical specification

Installation place: Cement roof
Fixed way: Concrete base
Installation angle: 5°/10°
Standard wind: 35m/s
Standard snow: 1200mm
Design standard: JISC 8955:2017
GB50009-2012, GB50797-2012
Main material: AL6005-T5
Fastener material: SUS 304

Advantages

- High-strength aluminum
- Ultra light-weight design
- Easy to install

Main Components



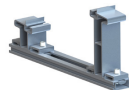
End clamp



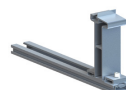
Clip



Front support

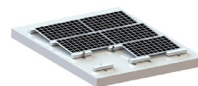
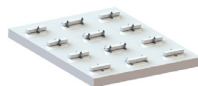


Mid support

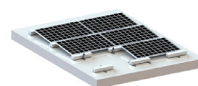
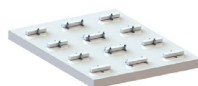


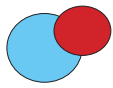
Rear support

Installation effect 5°

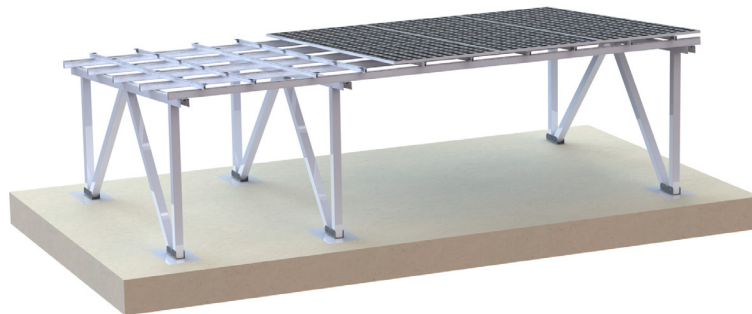


Installation effect 10°





CPT Aluminum carport



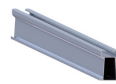
Technical specification

Installation place: Cement roof or flat ground
Fixed way:Ground screw/Concrete base
Installation angle: 5-45°
Standard wind:36m/s
Standard snow: 800mm
Design standard: JISC 8955:2017
GB50009-2012, GB50797-2012
Main material:AL6005-T5
Fastener material:SUS 304

Advantages

- Suit for all kinds of scale PV power station
- Pre-installed as more as possible
- High-strength aluminum
- Ultra light-weight design
- Easy to install

Main Components



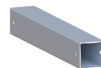
Rail



Beam



Longitudinal beam



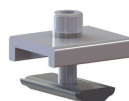
Column



Adjustable gasket1



Adjustable gasket 2



Clip

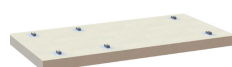


Joiner

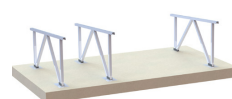


Foundation

Installation step



1. Install the pile



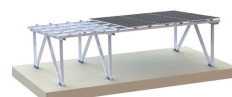
2.Install the column



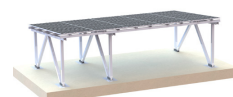
3.Install the beam



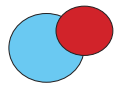
4.Install the rail



5.Install the panel



6.Complete



Japan 700KW



Japan 300KW



Japan 224KW



Japan 76KW



Japan 13KW



Japan 100KW



Japan 250KW



Italy 900KW



Tahiti 6KW



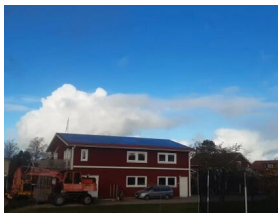
New Zealand 10KW



Sweden 14.76KW



Sweden 15.58KW



Sweden 15.99KW



Sweden 85.28KW



Iraq 39.6KW-15.12kWh



Indonesia 5KW-10.24kWh

SHANGAI PVSYS NEW ENERGY CO.,LTD
Add:3rd floor,No 1559 East Zhuan Xing Road,Shanghai,China.
Telephone: +86 17821615616
Email:sales@pv-system.net

PVSYS ENERGY GROUP LIMITED
Add: RM22 2/F Fu Tao Building No.98 Argyle Street Kowloon,HONG KONG
Telephone: +86 17821615616
Email:sales@pv-system.net

