

150W Gobo Projector User Manual



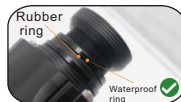
Specification

Item	LED Gobo Projector
Power	150W
Input	AC85~265V
LED Chip	Osram
Angle	15° /30° /50°
CCT	3000K/4000K/6000K
Projection Distance	3~150m(10~495ft)
IP Rank	Ip65
Lamp Size	310x210x230mm
Gobo Spec	OD:48mm;ID:28mm
N.W	5.5KG

CAUTION

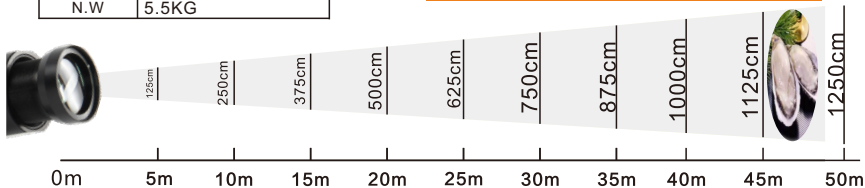


⚠ Rubber ring didn't attach well

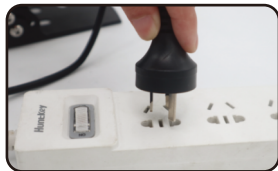


Rubber ring attached well

Image Size Against Projection Distance



Changing Glass



Power off & Pull up waterproof male & female cable



Loosen 4 pcs screws & take apart the heat sink



Take out the old gobo & bring the new gobo, keep the back side up



Put the new gobo and fix the jump ring

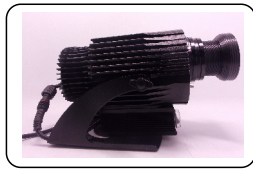


Put the heat sink back and fasten the 4 pcs screws



Connect the male and female cable and power on

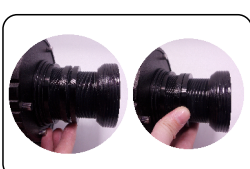
Adjust Image Definition



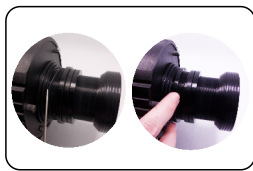
Fix the lamp at a proper projection place (image maybe a little misty) & Adjust image size and definition



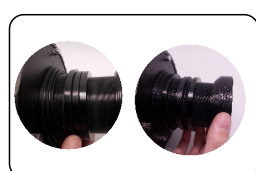
Screw out the waterproof ring & Screw the front lens to adjust image size



1. Screw out the ring on the front lens to adjust image
2. After focus, screw in the ring to fix the front lens



1. Fix the waterproof rubber ring
2. Ensure the waterproof ring and rubber ring attach tightly (ensure waterproof)



1. Inner zoom lens to adjust image size
2. Outer zoom lens to adjust image definition

CAUTION

1. waterproof ring and rubber ring should be attached tightly
2. Ensure waterproof ring attach tightly to the lamp body
3. Don't soak the whole lamp into water

Remote Controller

