

## **KL-H2D1T0611 SPINNER HANGER SHOT BLASTING MACHINE**

- SPECIAL FOR CLEANING CASTINGS, WELDING PARTS, FORGINGS, HEAT TREATMENT PARTS , STEEL CYLINDERS ETC



**KHOLEE BLAST - YANCHENG DAFENG SANXING MACHINERY CO., LTD**

EXPERT IN BLASTING & PAINTING INDUSTRY

| DALONG INDUSTRIAL PARK, DAFENG, YANCHENG, JIANGSU, CHINA 224125

| TEL: +86-139 1469 671

| FAX: +86-515-8375 5498

| EMAIL: KHOLEEBLAST@GMAIL.COM

| WEBSITE: WWW.KHOLEEBLASTPAINT.COM

| CARL CHEN

| WHATSAPP/MOBILE: +86-139 1469 8671

KL-H2D1T0611 Spinner hanger shot blasting machines are among the most flexible types of blasting equipment, available semi automatic or fully automatic. It is typically designed to handle mixed loads of medium and large components which often include fragile and sensitive parts that cannot be tumbled in bulk loads. The workpieces are suspended on hangers and carried into blasting chamber.

The Shot Blasting Machine from KHOLEE BLAST is ideal for heavy and complex shaped workpieces like: casts, welded constructions, forged and pressed parts, remodelled cold or hot and of various complicated forms, steel cylinders, springs, etc.

Spinner hanger shot blasting machine is mostly used for blast cleaning, desanding and decoring in die cast industry as well for descaling, derusting and reconditioning in metalworking industry.



Size of Blasting Jobs	
Max Size	Φ600× H1,100 mm
Max Weight	600KG
Blasting Chamber	
Size	1,400×1,400×2,600mm
Chamber Manufacturing	The whole blasting chamber is made 12mm Mn13 steel plate bending and welding together, blasting hot spot area is protected by 10mm Mn13 wearing resistance plate liner Mn13 wearing resistance plate liner service life ≥ 10,000hrs
Time Needed For Blasting	
Casting	4~15 min
Welding Parts	3~10 min
Steel Shots Size	
Model	S330
Initial Input	1,000kg
Automatic Entry & Exit Door	
Type	Pneumatic Control Automatic Door
Protection Liner	Protected by 6mm Mn13 steel plate
Blasting Wheel	
Model	KL-BW350D
Type	Direct Coupling
Quantity	2 sets
Rotating speed	2930 rmp
Shot blasting capacity	200kg/min × 2
Power	11kw × 2
Service Life	Blades ≥ 1000 hrs, Control Cage ≥ 2000 hrs, Impeller ≥ 2000 hrs
'Y' trail Spinner Hanger Lifting System	
Trail type	'Y' trail
Electrical Chain hoist Model	HKDL0201
Quantity	2 set
Lifting power	1.5 kw
Walking power	0.4 kw
Walking speed	20 m/min
Hanger quantity	2 pcs
Loading capacity	1000 kg
Rotating speed	2.8 rmp
Self-Rotating power	0.55kw

**KHOLEE BLAST - YANCHENG DAFENG SANXING MACHINERY CO., LTD • Blasting & Painting Solutions**

Dalong Industrial Park, Dafeng, Yancheng, Jiangsu, China • 221425

© 2020 Kholeeblast - Doc.nr.KL2001 Rev.A June 2020

Tel: +86-139 1469 8671

• Fax: +86-515-83755498

Printed in Yancheng China

Email: kholeeblast@gmail.com • Web: www.kholeeblastpaint.com

• The right is reserved to make changes at any time without notice

Screw Conveyor	
Delivery capacity	24 t/h
Rotation Speed Inspection	Proximity Switch
Power	2.2 kw ×1
Quantity	1 set
Bucket Elevator	
Lifting capacity	24 t/h ×1
Rotation Speed Inspection	Proximity Switch
Power	3 kw
Quantity	1 set
Abrasive - Dust Separator	
Separating capacity	24 t/h
Type	Air Wash
Air speed in separating area	4~5 m/s
Quantity	1 set
Pneumatic Shots Supply Valve	
Compressed Air Pressure	0.4~0.6 Mpa
Quantity	2 pcs
Cyclone Dust Collector	
Diameter	Φ900mm
Qty	1 Set
Pulse Jet Dust Collector	
Model	KL-DC-6
Cartridge Filter	Φ325 × 660mm
Cartridge Filter Quantity	6 pcs
Dust Cleaning Type	Pulse Jet
Dust Emission from exhausted air	≤10 mg/m <sup>3</sup>
Air Volume	~ 4,500 m <sup>3</sup> /hr
Centrifugal Air Fan	5.5 kw
Quantity	1 Set
Electrical Control System	
Voltage/Frequency	380V/50Hz/3Ph or 415V/50Hz/3Ph
Operation Type	Manual control
Equipped with Famous Brand Elements Such as Schneider, Mitsubishi, Siemens	PLC, breaker, contactor, time relay, thermal relay, button, switch etc. Interlock System, Failure Alarming
Total Power: ~ 37kw	
Equipment Size: L × W × H 4300mm×4000mm×5000mm	

**KHOLEE BLAST - YANCHENG DAFENG SANXING MACHINERY CO., LTD • Blasting & Painting Solutions**

Dalong Industrial Park, Dafeng, Yancheng, Jiangsu, China • 221425

© 2020 Kholeeblast - Doc.nr.KL2001 Rev.A June 2020

Tel: +86-139 1469 8671

• Fax: +86-515-83755498

Printed in Yancheng China

Email: kholeeblast@gmail.com • Web: www.kholeeblastpaint.com

• The right is reserved to make changes at any time without notice

## Supply Scope of Spinner Hanger Shot Blasting Machine For Seller & Buyer

### 3.1 Supply Scope from the seller

KL-H2D1T0611 'Y' Trail Spinner Hanger Shot Blasting Machine	01) Shot Blasting Chamber Made by Mn13 steel plate with Mn13 Wearing resistance line to protect wall
	02) Mn13/6mm, Pneumatic Cylinder Auto Door, 1 set
	03) 11kw-KLQ350D Direct Coupling Blasting Turbine, 2 sets
	04) 2.2kw-24t/hr Screw Conveyor, 1 set
	05) 3kw-24t/hr Bucket Elevator, 01 set
	06) 24t/hr Air Wash type Separator, 01 set
	07) Pneumatic Shots Supply Valve, 2 sets
	08) Cyclone Dust Collector, 1 set
	09) KL-DC-6 Pulse Jet Dust Collector, 1 set
	10) 5.5kw Centrifugal air fan, 01 set
	11) Air Ducting Pipeline, 01 set
	12) 'Y' trail, 2 units of 1t hoist, self rotation device, 1 set
	13) Electrical control system, 01 set
	14) Platform & Railings
	15) Accessories

### 3.2 Supply Scope from the buyer

KL-H2D1T0611 'Y' Trail Spinner Hanger Shot Blasting Machine	01) Compressed Air System including pipelines to blasting equipment & air compressor.
	02) Electrical Power
	03) Abrasive: steel shots/grits
	04) Hanging tools to hang the workpieces for blasting.
	05) Installation tools
	06) Workpieces for blasting
	07) Foundation Construction
	08) Workers to help installation

## Energy Consumption List

### Electrical Power Consumption List

No.	Name	Power
1	Blasting Turbine	11kw × 2
2	Screw Conveyor	2.2kw × 1
3	Bucket Elevator	3kw × 1
4	Electrical Hoist	(1.5kw+0.4kw)× 2
5	Self-Rotation	0.44kw × 1
6	Centrifugal Air Fan	5.5kw × 1
7	Total Power	36.94kw

### Compressed Air Consumption

No.	Name	Power
1	Dust Collector	1.0cbm/min,0.6Mpa
2	Pneumatic Supply Valve	

Remark:

- The buyer needs to provide piston air compressor 1.05cbm/min, 1.05Mpa, air tank, air drier, water oil separator, relief valves and compressed air pipeline by themselves.

## Key Parts Manufacturer

No.	Name	Manufacturer
1	Blasting Turbine	Kholee / Sanxing
2	Wearing Resistance Spare Parts in Blasting Turbine	KXD
3	Blasting Turbine Motor	Bede / Dazhong/ Huali
4	Electrical Chain Hoist	Henan/Zhejiang
5	Gear Reduced Motor	Guomao / Tailong
6	Mn13 Steel Plate	Bao Steel / Tai Steel
7	Centrifugal Air Fan	Nantong / Shanghai / Dongtai
8	Dust Collector	Sanxing
9	Key Electrical Elements	Schneider
10	PLC	Mitsubishi /Siemens

**KHOLEE BLAST - YANCHENG DAFENG SANXING MACHINERY CO., LTD** • Blasting & Painting Solutions

Dalong Industrial Park, Dafeng, Yancheng, Jiangsu, China • 221425

© 2020 Kholeeblast - Doc.nr.KL2001 Rev.A June 2020

Tel: +86-139 1469 8671

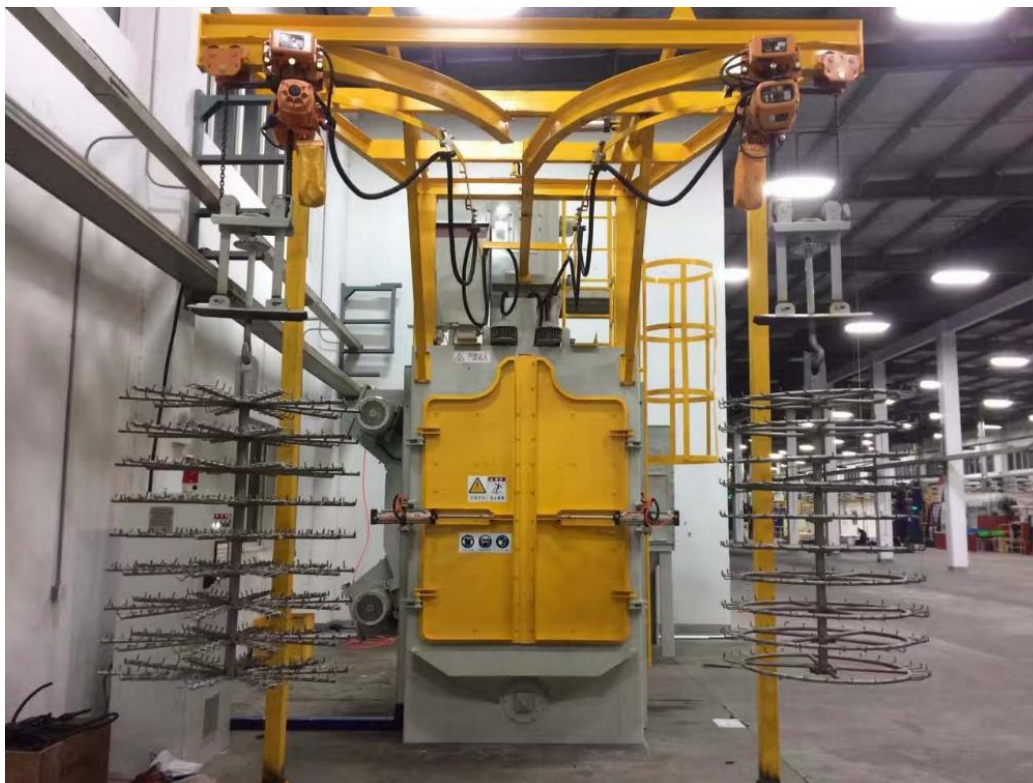
• Fax: +86-515-83755498

Printed in Yancheng China

Email: kholeeblast@gmail.com • Web: www.kholeeblastpaint.com

• The right is reserved to make changes at any time without notice

## Photos of Shot Blasting Machine



**KHOLEE BLAST - YANCHENG DAFENG SANXING MACHINERY CO., LTD • Blasting & Painting Solutions**

Dalong Industrial Park, Dafeng, Yancheng, Jiangsu, China • 221425

© 2020 Kholeeblast - Doc.nr.KL2001 Rev.A June 2020

Tel: +86-139 1469 8671

• Fax: +86-515-83755498

Printed in Yancheng China

Email: kholeeblast@gmail.com • Web: www.kholeeblastpaint.com

• The right is reserved to make changes at any time without notice



**KHOLEE BLAST - YANCHENG DAFENG SANXING MACHINERY CO., LTD • Blasting & Painting Solutions**

Dalong Industrial Park, Dafeng, Yancheng, Jiangsu, China • 221425

© 2020 Kholeeblast - Doc.nr.KL2001 Rev.A June 2020

Tel: +86-139 1469 8671

• Fax: +86-515-83755498

Printed in Yancheng China

Email: kholeeblast@gmail.com • Web: www.kholeeblastpaint.com

• The right is reserved to make changes at any time without notice





---

**KHOLEE BLAST - YANCHENG DAFENG SANXING MACHINERY CO., LTD • Blasting & Painting Solutions**

Dalong Industrial Park, Dafeng, Yancheng, Jiangsu, China • 221425

© 2020 Kholeeblast - Doc.nr.KL2001 Rev.A June 2020

Tel: +86-139 1469 8671

• Fax: +86-515-83755498

Printed in Yancheng China

Email: kholeeblast@gmail.com • Web: www.kholeeblastpaint.com

• The right is reserved to make changes at any time without notice